

Summary

Production Name	C1qL2 Rabbit Polyclonal Antibody
Description	Rabbit Polyclonal Antibody
Host	Rabbit
Application	WB,IHC-P,IF-P,IF-F,ICC/IF,ELISA
Reactivity	Human,Mouse

Performance

Conjugation	Unconjugated
Modification	Unmodified
Isotype	IgG
Clonality	Polyclonal
Form	Liquid
Storage	Store at 4°C short term. Aliquot and store at -20°C long term. Avoid freeze/thaw cycles.
Buffer	Liquid in PBS containing 50% glycerol, 0.5% BSA and 0.02% New type preservative N.
Purification	Affinity purification

Immunogen

Gene Name	C1QL2
Alternative Names	C1QL2; Complement C1q-like protein 2
Gene ID	165257.0
SwissProt ID	Q7Z5L3.The antiserum was produced against synthesized peptide derived from human C1QL2. AA range:231-280

Application

Dilution Ratio	WB 1:500-1:2000, IHC-P 1:100-1:300, ELISA 1:10000, IF-P/IF-F/ICC/IF 1:50-200
Molecular Weight	32-36kDa

Background

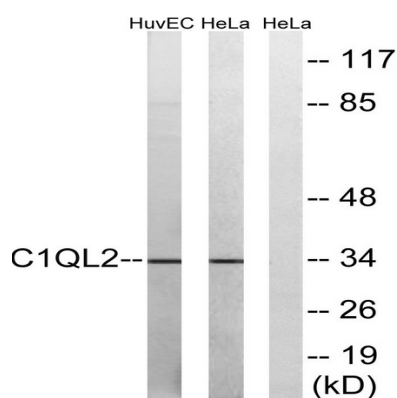
Product Name: C1qL2 Rabbit Polyclonal Antibody
Catalog #: APRab07726



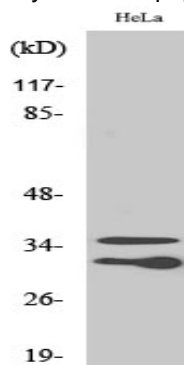
similarity:Contains 1 C1q domain.,similarity:Contains 1 collagen-like domain.,similarity:Contains 1 C1q domain.,similarity:Contains 1 collagen-like domain.,

Research Area

Image Data



Western blot analysis of lysates from HeLa and HUVEC cells, using C1QL2 Antibody. The lane on the right is blocked with the synthesized peptide.



Western Blot analysis of various cells using C1qL2 Polyclonal Antibody

Note

For research use only.