

**Product Name: C1orf181 Rabbit Polyclonal Antibody**  
**Catalog #: APRab07718**



## Summary

|                        |                                     |
|------------------------|-------------------------------------|
| <b>Production Name</b> | C1orf181 Rabbit Polyclonal Antibody |
| <b>Description</b>     | Rabbit Polyclonal Antibody          |
| <b>Host</b>            | Rabbit                              |
| <b>Application</b>     | WB,IHC-P,IF-P,IF-F,ICC/IF,ELISA     |
| <b>Reactivity</b>      | Human,Mouse                         |

## Performance

|                     |  |
|---------------------|--|
| <b>Conjugation</b>  | Unconjugated   |
| <b>Modification</b> | Unmodified   |
| <b>Isotype</b>      | IgG  |
| <b>Clonality</b>    | Polyclonal   |
| <b>Form</b>         | Liquid   |
| <b>Storage</b>      | Store at 4°C short term. Aliquot and store at -20°C long term. Avoid freeze/thaw cycles. |
| <b>Buffer</b>       | Liquid in PBS containing 50% glycerol, 0.5% BSA and 0.02% New type preservative N.       |
| <b>Purification</b> | Affinity purification  |

## Immunogen

|                          |   |
|--------------------------|---|
| <b>Gene Name</b>         | ZNHIT6  |
| <b>Alternative Names</b> | ZNHIT6; BCD1; C1orf181; Box C/D snoRNA protein 1; Serologically defined breast cancer antigen NY-BR-75; Zinc finger HIT domain-containing protein 6 |
| <b>Gene ID</b>           | 54680.0   |
| <b>SwissProt ID</b>      | Q9NWK9. The antiserum was produced against synthesized peptide derived from human CA181. AA range:301-350   |

## Application

|                         |  |
|-------------------------|--|
| <b>Dilution Ratio</b>   | WB 1:500-1:2000, ELISA 1:5000, IF-P/IF-F/ICC/IF 1:50-200 |
| <b>Molecular Weight</b> | 54kDa  |

## Background

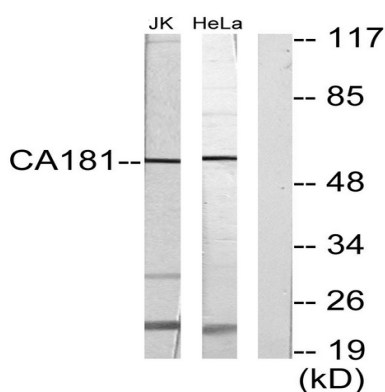
**Product Name: C1orf181 Rabbit Polyclonal Antibody**  
**Catalog #: APRab07718**



ZNHIT6 (Zinc Finger HIT-Type Containing 6) is a Protein Coding gene. GO annotations related to this gene include identical protein binding and enzyme binding. small nucleolar ribonucleoprotein complex assembly, box C/D snoRNP assembly, ribonucleoprotein complex biogenesis, ribonucleoprotein complex assembly, cellular macromolecular complex subunit organization, cellular macromolecular complex assembly, macromolecular complex subunit organization, macromolecular complex assembly,

## Research Area

## Image Data



Western blot analysis of lysates from Jurkat and HeLa cells, using CA181 Antibody. The lane on the right is blocked with the synthesized peptide.

## Note

For research use only.