

Product Name: C16L2 Rabbit Polyclonal Antibody
Catalog #: APRab07713



Summary

Production Name	C16L2 Rabbit Polyclonal Antibody
Description	Rabbit Polyclonal Antibody
Host	Rabbit
Application	WB,ELISA
Reactivity	Human,Rat,Mouse

Performance

Conjugation	Unconjugated
Modification	Unmodified
Isotype	IgG
Clonality	Polyclonal
Form	Liquid
Storage	Store at 4°C short term. Aliquot and store at -20°C long term. Avoid freeze/thaw cycles.
Buffer	Liquid in PBS containing 50% glycerol, and 0.02% New type preservative N.
Purification	Affinity purification

Immunogen

Gene Name	CD164L2 UNQ6122/PRO20044
Alternative Names	
Gene ID	388611.0
SwissProt ID	Q6UWJ8. Synthesized peptide derived from human protein . at AA range: 20-100

Application

Dilution Ratio	WB 1:500-2000, ELISA 1:5000-20000
Molecular Weight	19kDa

Background

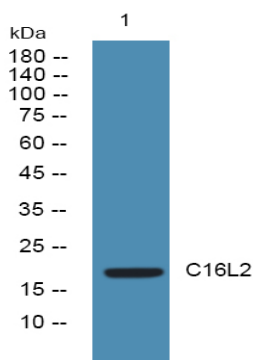
similarity:Belongs to the CD164 family.,similarity:Belongs to the CD164 family.,

Product Name: C16L2 Rabbit Polyclonal Antibody
Catalog #: APRab07713



Research Area

Image Data



Western blot analysis of lysates from SW480 cells, primary antibody was diluted at 1:1000, 4°over night

Note

For research use only.