

Product Name: BUD31 Rabbit Polyclonal Antibody
Catalog #: APRab07700



Summary

| | |
|------------------------|----------------------------------|
| Production Name | BUD31 Rabbit Polyclonal Antibody |
| Description | Rabbit Polyclonal Antibody |
| Host | Rabbit |
| Application | WB,IHC-P,IF-P,IF-F,ICC/IF,ELISA |
| Reactivity | Human,Mouse,Rat |

Performance

| | |
|---------------------|--|
| Conjugation | Unconjugated |
| Modification | Unmodified |
| Isotype | IgG |
| Clonality | Polyclonal |
| Form | Liquid |
| Storage | Store at 4°C short term. Aliquot and store at -20°C long term. Avoid freeze/thaw cycles. |
| Buffer | Liquid in PBS containing 50% glycerol, 0.5% BSA and 0.02% New type preservative N. |
| Purification | Affinity purification |

Immunogen

| | |
|--------------------------|--|
| Gene Name | BUD31 |
| Alternative Names | BUD31; EDG2; Protein BUD31 homolog; Protein EDG-2; Protein G10 homolog |
| Gene ID | 8896.0 |
| SwissProt ID | P41223.The antiserum was produced against synthesized peptide derived from human BUD31. AA range:10-59 |

Application

| | |
|-------------------------|--|
| Dilution Ratio | WB 1:500-1:2000, IHC-P 1:100-1:300, ELISA 1:20000, IF-P/IF-F/ICC/IF 1:50-200 |
| Molecular Weight | 17kDa |

Background

Product Name: BUD31 Rabbit Polyclonal Antibody
Catalog #: APRab07700

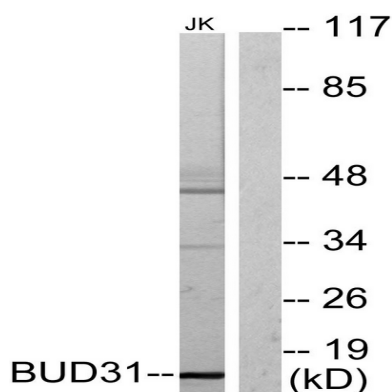


similarity:Belongs to the BUD31 (G10) family.,similarity:Belongs to the BUD31 (G10) family.,

Research Area

Spliceosome;

Image Data



Western blot analysis of lysates from Jurkat cells, using BUD31 Antibody. The lane on the right is blocked with the synthesized peptide.



Western Blot analysis of various cells using BUD31 Polyclonal Antibody cells nucleus extracted by Minute TM Cytoplasmic and Nuclear Fractionation kit (SC-003, Inventbiotech, MN, USA) .

Note

For research use only.