

Product Name: BTBD6 Rabbit Polyclonal Antibody
Catalog #: AP Rab07682



Summary

Production Name	BTBD6 Rabbit Polyclonal Antibody
Description	Rabbit Polyclonal Antibody
Host	Rabbit
Application	WB,IHC-P,IF-P,IF-F,ICC/IF,ELISA
Reactivity	Human,Mouse

Performance

Conjugation	Unconjugated
Modification	Unmodified
Isotype	IgG
Clonality	Polyclonal
Form	Liquid
Storage	Store at 4°C short term. Aliquot and store at -20°C long term. Avoid freeze/thaw cycles.
Buffer	Liquid in PBS containing 50% glycerol, 0.5% BSA and 0.02% New type preservative N.
Purification	Affinity purification

Immunogen

Gene Name	BTBD6
Alternative Names	BTBD6; BDPL; BTB/POZ domain-containing protein 6; Lens BTB domain protein
Gene ID	90135.0
SwissProt ID	Q96KE9. The antiserum was produced against synthesized peptide derived from human BTBD6. AA range:91-140

Application

Dilution Ratio	WB 1:500-1:2000, IHC-P 1:100-1:300, ELISA 1:10000, IF-P/IF-F/ICC/IF 1:50-200
Molecular Weight	45kDa

Background

similarity:Contains 1 BTB (POZ) domain.,tissue specificity:Expressed in lens.,similarity:Contains 1 BTB (POZ) domain.,tissue

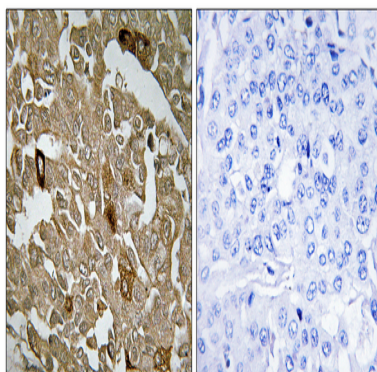
Product Name: BTBD6 Rabbit Polyclonal Antibody
Catalog #: APRab07682



specificity: Expressed in lens,

Research Area

Image Data



Immunohistochemistry analysis of paraffin-embedded human breast carcinoma tissue, using BTBD6 Antibody. The picture on the right is blocked with the synthesized peptide.

Note

For research use only.