

**Product Name: BMP-6 Rabbit Polyclonal Antibody**  
**Catalog #: APRab07600**



## Summary

<b>Production Name</b>	BMP-6 Rabbit Polyclonal Antibody
<b>Description</b>	Rabbit Polyclonal Antibody
<b>Host</b>	Rabbit
<b>Application</b>	WB,ELISA
<b>Reactivity</b>	Human,Mouse,Rat

## Performance

<b>Conjugation</b>	Unconjugated
<b>Modification</b>	Unmodified
<b>Isotype</b>	IgG
<b>Clonality</b>	Polyclonal
<b>Form</b>	Liquid
<b>Storage</b>	Store at 4°C short term. Aliquot and store at -20°C long term. Avoid freeze/thaw cycles.
<b>Buffer</b>	Liquid in PBS containing 50% glycerol, 0.5% BSA and 0.02% New type preservative N.
<b>Purification</b>	Affinity purification

## Immunogen

<b>Gene Name</b>	BMP6
<b>Alternative Names</b>	BMP6; VGR; Bone morphogenetic protein 6; BMP-6; VG-1-related protein; VG-1-R; VGR-1
<b>Gene ID</b>	654.0
<b>SwissProt ID</b>	P22004. The antiserum was produced against synthesized peptide derived from the Internal region of human BMP6. AA range:341-390

## Application

<b>Dilution Ratio</b>	WB 1:500-1:2000, ELISA 1:10000.Not yet tested in other applications.
<b>Molecular Weight</b>	60kDa

## Background

**Product Name: BMP-6 Rabbit Polyclonal Antibody**  
**Catalog #: AP Rab07600**

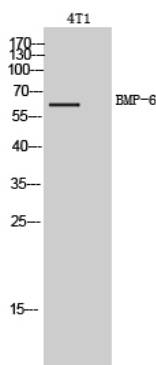


This gene encodes a secreted ligand of the TGF-beta (transforming growth factor-beta) superfamily of proteins. Ligands of this family bind various TGF-beta receptors leading to recruitment and activation of SMAD family transcription factors that regulate gene expression. The encoded preproprotein is proteolytically processed to generate each subunit of the disulfide-linked homodimer. This protein regulates a wide range of biological processes including iron homeostasis, fat and bone development, and ovulation. Differential expression of this gene may be associated with progression of breast and prostate cancer. Mutations in this gene may be associated with iron overload in human patients. [provided by RefSeq, Jul 2016],function:Induces cartilage and bone formation.,online information:Bone morphogenetic protein 6 entry,similarity:Belongs to the TGF-beta family.,subunit:Interacts with SOSTDC1.,

## Research Area

Hedgehog;TGF-beta;

## Image Data



Western Blot analysis of 4T1 cells using BMP-6 Polyclonal Antibody.. Secondary antibody was diluted at 1:20000

## Note

For research use only.