

Product Name: BMP-2 Rabbit Polyclonal Antibody
Catalog #: APRab07591



Summary

Production Name	BMP-2 Rabbit Polyclonal Antibody
Description	Rabbit Polyclonal Antibody
Host	Rabbit
Application	IF-P,IF-F,ICC/IF,WB,IHC-P,ELISA
Reactivity	Human,Mouse,Rat

Performance

Conjugation	Unconjugated
Modification	Unmodified
Isotype	IgG
Clonality	Polyclonal
Form	Liquid
Storage	Store at 4°C short term. Aliquot and store at -20°C long term. Avoid freeze/thaw cycles.
Buffer	Liquid in PBS containing 50% glycerol, 0.5% BSA and 0.02% New type preservative N.
Purification	Affinity purification

Immunogen

Gene Name	BMP2
Alternative Names	BMP2; BMP2A; Bone morphogenetic protein 2; BMP-2; Bone morphogenetic protein 2A; BMP-2A
Gene ID	650.0
SwissProt ID	P12643.The antiserum was produced against synthesized peptide derived from human BMP-2. AA range:226-275

Application

Dilution Ratio	IF-P/IF-F/ICC/IF 1:50-200, WB 1:500-1:2000, IHC-P 1:100-1:300, ELISA 1:10000.Not yet tested in other applications.
Molecular Weight	60kDa

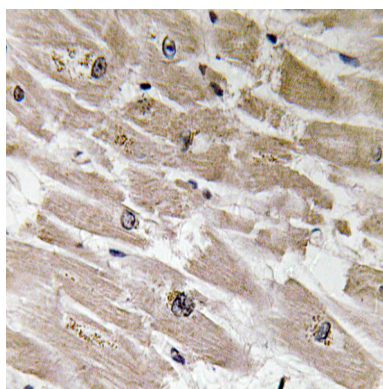
Background

This gene encodes a secreted ligand of the TGF-beta (transforming growth factor-beta) superfamily of proteins. Ligands of this family bind various TGF-beta receptors leading to recruitment and activation of SMAD family transcription factors that regulate gene expression. The encoded preproprotein is proteolytically processed to generate each subunit of the disulfide-linked homodimer, which plays a role in bone and cartilage development. Duplication of a regulatory region downstream of this gene causes a form of brachydactyly characterized by a malformed index finger and second toe in human patients. [provided by RefSeq, Jul 2016],function:Induces cartilage and bone formation.,online information:Bone morphogenetic protein 2 entry,similarity:Belongs to the TGF-beta family.,subunit:Homodimer; disulfide-linked. Interacts with GREM2 (By similarity) and SOSTDC1.,tissue specificity:Particularly abundant in lung, spleen and colon and in low but significant levels in heart, brain, placenta, liver, skeletal muscle, kidney, pancreas, prostate, ovary and small intestine.,

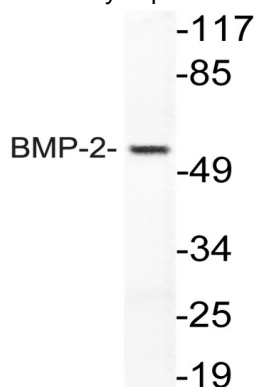
Research Area

Cytokine-cytokine receptor interaction;Hedgehog;TGF-beta;Pathways in cancer;Basal cell carcinoma;

Image Data

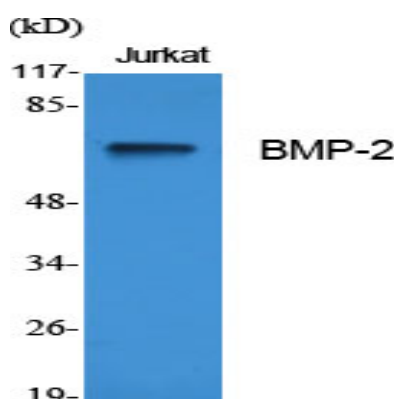


Immunohistochemistry analysis of BMP-2 antibody in paraffin-embedded human heart tissue.

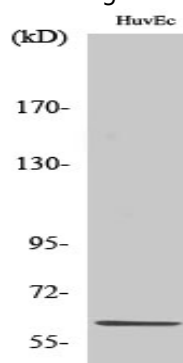


Western blot analysis of lysate from HUVECells, using BMP-2 antibody.

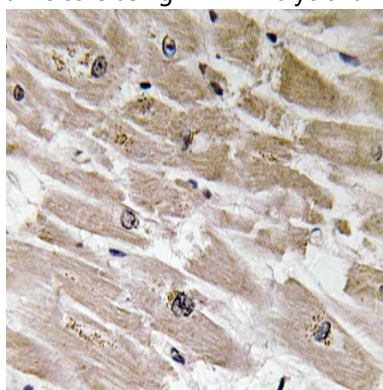
Product Name: BMP-2 Rabbit Polyclonal Antibody
Catalog #: APRab07591



Western Blot analysis of various cells using BMP-2 Polyclonal Antibody diluted at 1: 500



Western Blot analysis of HuvEc cells using BMP-2 Polyclonal Antibody diluted at 1: 500



Immunohistochemistry of paraffin-embedded human heart tissue using antibody at dilution 1:100

Note

For research use only.