

Product Name: BMP-1 Rabbit Polyclonal Antibody
Catalog #: APRab07587



Summary

Production Name	BMP-1 Rabbit Polyclonal Antibody
Description	Rabbit Polyclonal Antibody
Host	Rabbit
Application	IHC-P,IF-P,IF-F,ICC/IF,ELISA
Reactivity	Human,Mouse,Rat

Performance

Conjugation	Unconjugated
Modification	Unmodified
Isotype	IgG
Clonality	Polyclonal
Form	Liquid
Storage	Store at 4°C short term. Aliquot and store at -20°C long term. Avoid freeze/thaw cycles.
Buffer	Liquid in PBS containing 50% glycerol, 0.5% BSA and 0.02% New type preservative N.
Purification	Affinity purification

Immunogen

Gene Name	BMP1 PCOLC
Alternative Names	Bone morphogenetic protein 1 (BMP-1;EC 3.4.24.19;Mammalian tolloid protein;mTld;Procollagen C-proteinase;PCP)
Gene ID	649.0
SwissProt ID	P13497.Synthetic peptide from human protein at AA range: 131-180

Application

Dilution Ratio	IHC-P 1:50-200, ELISA 1:10000-20000, IF-P/IF-F/ICC/IF 1:50-200
Molecular Weight	

Background

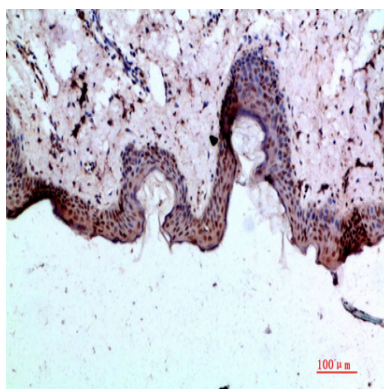
Product Name: BMP-1 Rabbit Polyclonal Antibody
Catalog #: AP Rab07587



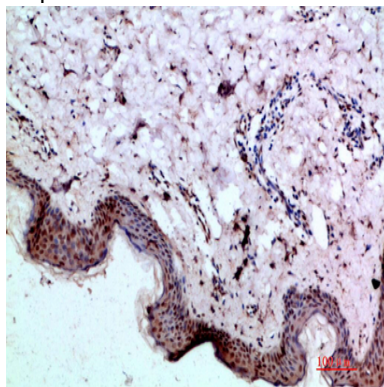
This gene encodes a protein that is capable of inducing formation of cartilage in vivo. Although other bone morphogenetic proteins are members of the TGF-beta superfamily, this gene encodes a protein that is not closely related to other known growth factors. This gene is expressed as alternatively spliced variants that share an N-terminal protease domain but differ in their C-terminal region. [provided by RefSeq, Aug 2008],catalytic activity: Cleavage of the C-terminal propeptide at Ala-|-Asp in type I and II procollagens and at Arg-|-Asp in type III.,cofactor: Binds 1 zinc ion per subunit.,enzyme regulation: Activity is increased by the procollagen C-endopeptidase enhancer protein.,function: Cleaves the C-terminal propeptides of procollagen I, II and III. Induces cartilage and bone formation. May participate in dorsoventral patterning during early development by cleaving chordin (CHRD).,similarity: Belongs to the peptidase M12A family.,similarity: Contains 2 EGF-like domains.,similarity: Contains 5 CUB domains.,tissue specificity: Ubiquitous.,

Research Area

Image Data



Immunohistochemical analysis of paraffin-embedded human-skin, antibody was diluted at 1:200



Immunohistochemical analysis of paraffin-embedded human-skin, antibody was diluted at 1:200

Note

For research use only.

Product Name: BMP-1 Rabbit Polyclonal Antibody
Catalog #: APRab07587

