

Summary

Production Name	BIG2 Rabbit Polyclonal Antibody
Description	Rabbit Polyclonal Antibody
Host	Rabbit
Application	WB,IHC-P,IF-P,IF-F,ICC/IF,ELISA
Reactivity	Human,Mouse,Rat

Performance

Conjugation	Unconjugated
Modification	Unmodified
Isotype	IgG
Clonality	Polyclonal
Form	Liquid
Storage	Store at 4°C short term. Aliquot and store at -20°C long term. Avoid freeze/thaw cycles.
Buffer	Liquid in PBS containing 50% glycerol, 0.5% BSA and 0.02% New type preservative N.
Purification	Affinity purification

Immunogen

Gene Name	ARFGEF2 ARFGEF2; ARFGEP2; BIG2; Brefeldin A-inhibited guanine nucleotide-exchange protein 2; Brefeldin A-inhibited GEP 2; ADP-ribosylation factor guanine nucleotide-exchange factor 2
Alternative Names	
Gene ID	10564.0
SwissProt ID	Q9Y6D5.The antiserum was produced against synthesized peptide derived from human ARFGEF2. AA range:1491-1540

Application

Dilution Ratio	WB 1:500-1:2000, IHC-P 1:100-1:300, IF-P/IF-F/ICC/IF 1:200-1:1000, ELISA 1:20000.Not yet tested in other applications.
-----------------------	--

Product Name: BIG2 Rabbit Polyclonal Antibody
Catalog #: APRab07559



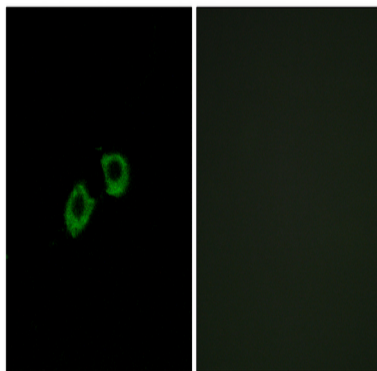
Molecular Weight 210kDa

Background

ADP-ribosylation factors (ARFs) play an important role in intracellular vesicular trafficking. The protein encoded by this gene is involved in the activation of ARFs by accelerating replacement of bound GDP with GTP and is involved in Golgi transport. It contains a Sec7 domain, which may be responsible for its guanine-nucleotide exchange activity and also brefeldin A inhibition. [provided by RefSeq, Jul 2008],disease:Defects in ARFGEF2 are the cause of autosomal recessive periventricular nodular heterotopia type 2 (PVNH2) [MIM:608097]; also called periventricular heterotopia with microcephaly autosomal recessive. PVNH2 is an autosomal recessive form characterized by microcephaly (small brain), severe developmental delay and recurrent infections. No anomalies extrinsic to the central nervous system, such as dysmorphic features or grossly abnormal endocrine or other conditions, are associated with PVNH2.,enzyme regulation:Inhibited by brefeldin A.,function:Promotes guanine-nucleotide exchange on ARF1, ARF5 and ARF6. Promotes the activation of ARF1/ARF5/ARF6 through replacement of GDP with GTP.,PTM:Phosphorylated upon DNA damage, probably by ATM or ATR.,similarity:Contains 1 SEC7 domain.,tissue specificity:Expressed in placenta, lung, heart, brain, kidney and pancreas.,

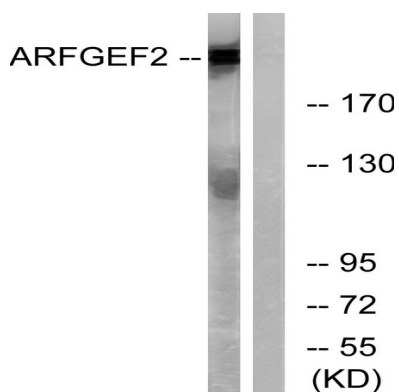
Research Area

Image Data

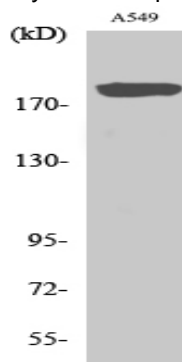


Immunofluorescence analysis of A549 cells, using ARFGEF2 Antibody. The picture on the right is blocked with the synthesized peptide.

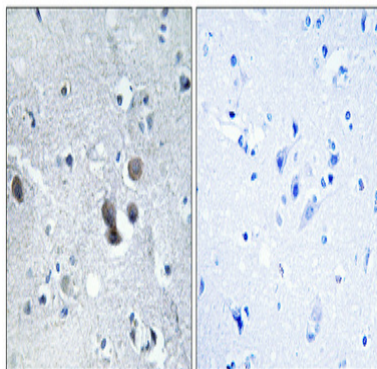
Product Name: BIG2 Rabbit Polyclonal Antibody
Catalog #: APRab07559



Western blot analysis of lysates from A549 cells, using ARFGEF2 Antibody. The lane on the right is blocked with the synthesized peptide.

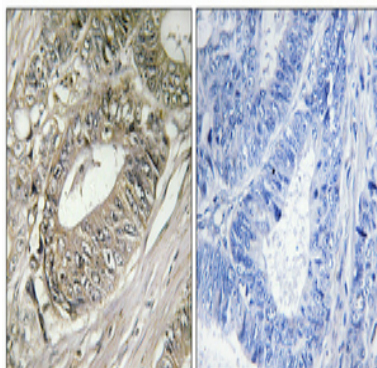


Western Blot analysis of various cells using BIG2 Polyclonal Antibody



Immunohistochemical analysis of paraffin-embedded Human brain. Antibody was diluted at 1:100 (4°, overnight) . High-pressure and temperature Tris-EDTA, pH 8.0 was used for antigen retrieval. Negative control (right) obtained from antibody was pre-absorbed by immunogen peptide.

Product Name: BIG2 Rabbit Polyclonal Antibody
Catalog #: APRab07559



Immunohistochemical analysis of paraffin-embedded Human colon cancer. Antibody was diluted at 1:100 (4°,overnight) . High-pressure and temperature Tris-EDTA,pH8.0 was used for antigen retrieval. Negative contrl (right) obtaned from antibody was pre-absorbed by immunogen peptide.

Note

For research use only.