

Product Name: BET5 Rabbit Polyclonal Antibody
Catalog #: APRab07536



Summary

Production Name	BET5 Rabbit Polyclonal Antibody
Description	Rabbit Polyclonal Antibody
Host	Rabbit
Application	IHC-P,IF-P,IF-F,ICC/IF,ELISA
Reactivity	Human,Mouse,Rat

Performance

Conjugation	Unconjugated
Modification	Unmodified
Isotype	IgG
Clonality	Polyclonal
Form	Liquid
Storage	Store at 4°C short term. Aliquot and store at -20°C long term. Avoid freeze/thaw cycles.
Buffer	Liquid in PBS containing 50% glycerol, 0.5% BSA and 0.02% New type preservative N.
Purification	Affinity purification

Immunogen

Gene Name	TRAPPC1
Alternative Names	TRAPPC1; BET5; MUM2; Trafficking protein particle complex subunit 1; BET5 homolog; Multiple myeloma protein 2; MUM-2
Gene ID	58485.0
SwissProt ID	Q9Y5R8. The antiserum was produced against synthesized peptide derived from human TRAPPC1. AA range:10-59

Application

Dilution Ratio	IHC-P 1:100-1:300, ELISA 1:5000, IF-P/IF-F/ICC/IF 1:50-200
Molecular Weight	

Background

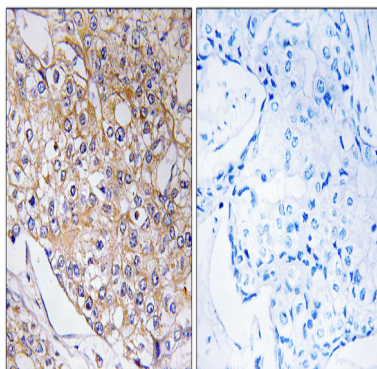
Product Name: BET5 Rabbit Polyclonal Antibody
Catalog #: APRab07536



trafficking protein particle complex 1 (TRAPPC1) Homo sapiens This gene product plays a role in vesicular transport of proteins to the Golgi apparatus from the endoplasmic reticulum. The encoded protein is a component of the multisubunit transport protein particle (TRAPP) complex. Alternative splicing results in multiple transcript variants.[provided by RefSeq, Oct 2009],function:May play a role in vesicular transport from endoplasmic reticulum to Golgi.,similarity:Belongs to the TRAPP small subunits family. BET5 subfamily.,subunit:Part of the multisubunit TRAPP (transport protein particle) complex.,

Research Area

Image Data



Immunohistochemistry analysis of paraffin-embedded human breast carcinoma tissue, using TRAPPC1 Antibody. The picture on the right is blocked with the synthesized peptide.

Note

For research use only.