

**Product Name: BAP31 Rabbit Polyclonal Antibody**  
**Catalog #: APRab07465**



## Summary

<b>Production Name</b>	BAP31 Rabbit Polyclonal Antibody
<b>Description</b>	Rabbit Polyclonal Antibody
<b>Host</b>	Rabbit
<b>Application</b>	WB,ELISA
<b>Reactivity</b>	Human,Mouse,Rat

## Performance

<b>Conjugation</b>	Unconjugated
<b>Modification</b>	Unmodified
<b>Isotype</b>	IgG
<b>Clonality</b>	Polyclonal
<b>Form</b>	Liquid
<b>Storage</b>	Store at 4°C short term. Aliquot and store at -20°C long term. Avoid freeze/thaw cycles.
<b>Buffer</b>	Liquid in PBS containing 50% glycerol, 0.5% BSA and 0.02% New type preservative N.
<b>Purification</b>	Affinity purification

## Immunogen

<b>Gene Name</b>	BCAP31
<b>Alternative Names</b>	BCAP31; BAP31; DXS1357E; B-cell receptor-associated protein 31; BCR-associated protein 31; Bap31; 6C6-AG tumor-associated antigen; Protein CDM; p28
<b>Gene ID</b>	10134.0
<b>SwissProt ID</b>	P51572.The antiserum was produced against synthesized peptide derived from human BAP31. AA range:151-200

## Application

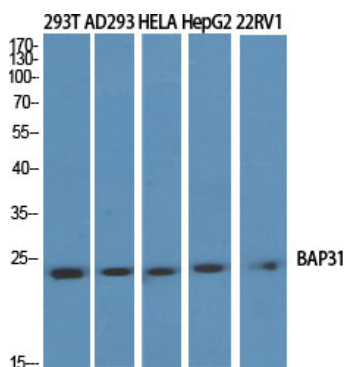
<b>Dilution Ratio</b>	WB 1:500-1:2000, ELISA 1:40000.Not yet tested in other applications.
<b>Molecular Weight</b>	28kDa

## Background

This gene encodes a member of the B-cell receptor associated protein 31 superfamily. The encoded protein is a multi-pass transmembrane protein of the endoplasmic reticulum that is involved in the anterograde transport of membrane proteins from the endoplasmic reticulum to the Golgi and in caspase 8-mediated apoptosis. Microdeletions in this gene are associated with contiguous ABCD1/DXS1375E deletion syndrome (CADD5), a neonatal disorder. Alternative splicing of this gene results in multiple transcript variants. Two related pseudogenes have been identified on chromosome 16. [provided by RefSeq, Jan 2012],disease:Microdeletions in BCAP31 are involved in the contiguous ABCD1/DXS1375E deletion syndrome (CADD5) [MIM:300475]. Patients manifest profound neonatal hypotonia, subsequent failure to thrive, and cholestatic liver disease.,function:May play a role in anterograde transport of membrane proteins from the endoplasmic reticulum to the Golgi. May be involved in CASP8-mediated apoptosis.,PTM:Cleaved by CASP8 and other caspases.,similarity:Belongs to the BCAP29/BCAP31 family.,subcellular location:May shuttle between the ER and the intermediate compartment/cis-Golgi complex.,subunit:Homodimer and heterodimer with BCAP29. Binds CASP8 (isoform 9) as a complex containing BCAP31, BCAP29, BCL2 and/or BCL2L1. Interacts with VAMP3, VAMP1 and membrane IgD immunoglobulins. May interact with ACTG1 and non-muscle myosin II. Interacts with PTPLB.,tissue specificity:Ubiquitous.,

## Research Area

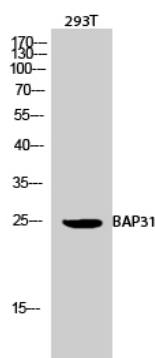
## Image Data



Western Blot analysis of various cells using BAP31 Polyclonal Antibody diluted at 1: 2000

**Product Name: BAP31 Rabbit Polyclonal Antibody**  
**Catalog #: APRab07465**

---



Western Blot analysis of 293T cells using BAP31 Polyclonal Antibody diluted at 1: 2000

### **Note**

For research use only.