

**Product Name: BAIAP2L2 Rabbit Polyclonal Antibody**  
**Catalog #: APRab07454**



## Summary

<b>Production Name</b>	BAIAP2L2 Rabbit Polyclonal Antibody
<b>Description</b>	Rabbit Polyclonal Antibody
<b>Host</b>	Rabbit
<b>Application</b>	WB,IHC-P,IF-P,IF-F,ICC/IF,ELISA
<b>Reactivity</b>	Human,Mouse

## Performance

<b>Conjugation</b>	Unconjugated
<b>Modification</b>	Unmodified
<b>Isotype</b>	IgG
<b>Clonality</b>	Polyclonal
<b>Form</b>	Liquid
<b>Storage</b>	Store at 4°C short term. Aliquot and store at -20°C long term. Avoid freeze/thaw cycles.
<b>Buffer</b>	Liquid in PBS containing 50% glycerol, 0.5% BSA and 0.02% New type preservative N.
<b>Purification</b>	Affinity purification

## Immunogen

<b>Gene Name</b>	BAIAP2L2 BAIAP2L2; Brain-specific angiogenesis inhibitor 1-associated protein 2-like protein 2;
<b>Alternative Names</b>	BAI1-associated protein 2-like protein 2; Planar intestinal- and kidney-specific BAR domain protein; Pinkbar
<b>Gene ID</b>	80115.0
<b>SwissProt ID</b>	Q6UXY1.The antiserum was produced against synthesized peptide derived from human BAIAP2L2. AA range:111-160

## Application

<b>Dilution Ratio</b>	WB 1:500-1:2000, IHC-P 1:100-1:300, ELISA 1:40000, IF-P/IF-F/ICC/IF 1:50-200
<b>Molecular Weight</b>	52kDa

**Product Name: BAIAP2L2 Rabbit Polyclonal Antibody**  
**Catalog #: APRab07454**

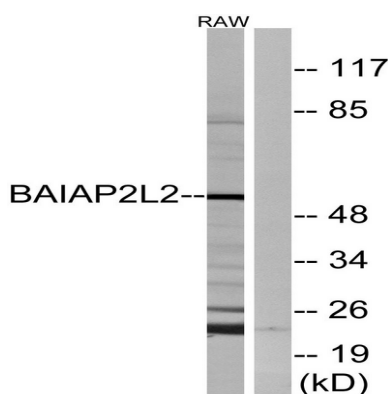


## Background

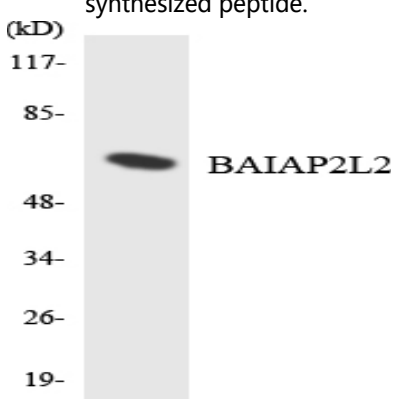
The protein encoded by this gene binds phosphoinositides and promotes the formation of planar or curved membrane structures. The encoded protein is found in RAB13-positive vesicles and at intercellular contacts with the plasma membrane. [provided by RefSeq, Dec 2012],domain:The IMD domain is predicted to have a helical structure. It may induce actin bundling and filopodia formation.,function:May function as an adapter protein .,similarity:Contains 1 IMD (IRSp53/MIM homology) domain.,similarity:Contains 1 SH3 domain.,

## Research Area

## Image Data



Western blot analysis of lysates from RAW264.7 cells, using BAIAP2L2 Antibody. The lane on the right is blocked with the synthesized peptide.



Western blot analysis of the lysates from HT-29 cells using BAIAP2L2 antibody.

## Note

For research use only.