

Product Name: AW-1 Rabbit Polyclonal Antibody
Catalog #: APRab07385



Summary

| | |
|------------------------|---------------------------------|
| Production Name | AW-1 Rabbit Polyclonal Antibody |
| Description | Rabbit Polyclonal Antibody |
| Host | Rabbit |
| Application | WB,IHC-P,IF-P,IF-F,ICC/IF,ELISA |
| Reactivity | Human,Rat,Mouse |

Performance

| | |
|---------------------|--|
| Conjugation | Unconjugated |
| Modification | Unmodified |
| Isotype | IgG |
| Clonality | Polyclonal |
| Form | Liquid |
| Storage | Store at 4°C short term. Aliquot and store at -20°C long term. Avoid freeze/thaw cycles. |
| Buffer | Liquid in PBS containing 50% glycerol, 0.5% BSA and 0.02% New type preservative N. |
| Purification | Affinity purification |

Immunogen

| | |
|--------------------------|---|
| Gene Name | ZNF174 |
| Alternative Names | ZNF174; ZSCAN8; Zinc finger protein 174; AW-1; Zinc finger and SCAN domain-containing protein 8 |
| Gene ID | 7727.0 |
| SwissProt ID | Q15697.The antiserum was produced against synthesized peptide derived from human ZNF174. AA range:201-250 |

Application

| | |
|-------------------------|--|
| Dilution Ratio | WB 1:500-1:2000, IHC-P 1:100-1:300, IF-P/IF-F/ICC/IF 1:200-1:1000, ELISA 1:10000.Not yet tested in other applications. |
| Molecular Weight | 46kDa |

Background

function:Transcriptional repressor.,similarity:Belongs to the krueppel C2H2-type zinc-finger protein

family.,similarity:Contains 1 SCAN box domain.,similarity:Contains 3 C2H2-type zinc fingers.,subunit:Homodimer.,tissue

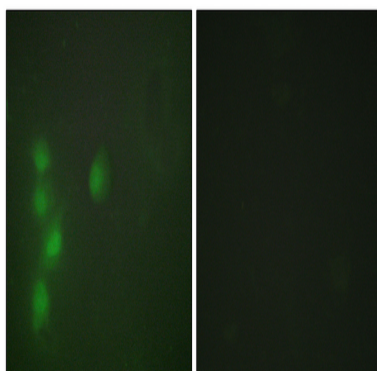
specificity:Expressed in a variety of organs, but most strongly in adult testis and ovary followed by small intestine, colon, prostate, thymus, spleen, pancreas, skeletal muscle, heart, brain and kidney. Also expressed in umbilical vein endothelial

cells, foreskin fibroblast and HEPG2 cells.,function:Transcriptional repressor.,similarity:Belongs to the krueppel C2H2-type zinc-finger protein family.,similarity:Contains 1 SCAN box domain.,similarity:Contains 3 C2H2-type zinc

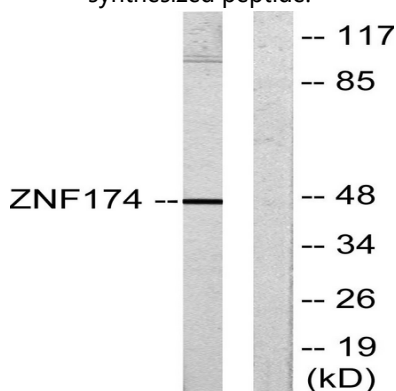
fingers.,subunit:Homodimer.,tissue specificity:Expressed in a variety of organs, but most strongly in adult testis and ovary followed by small intestine, colon, prostate, thymus, spleen, pancreas, skeletal muscle, heart, brain and kidney. Also expressed in umbilical vein endothelial cells, foreskin fibroblast and HEPG2 cells.,

Research Area

Image Data



Immunofluorescence analysis of HUVEC cells, using ZNF174 Antibody. The picture on the right is blocked with the synthesized peptide.

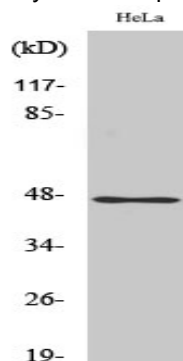


Western blot analysis of lysates from HeLa cells, using ZNF174 Antibody. The lane on the right is blocked with the

Product Name: AW-1 Rabbit Polyclonal Antibody
Catalog #: APRab07385



synthesized peptide.



Western Blot analysis of various cells using AW-1 Polyclonal Antibody

Note

For research use only.