

Product Name: ATF-6 β Rabbit Polyclonal Antibody
Catalog #: APRab07280



Summary

| | |
|------------------------|--|
| Production Name | ATF-6 β Rabbit Polyclonal Antibody |
| Description | Rabbit Polyclonal Antibody |
| Host | Rabbit |
| Application | WB,IHC-P,IF-P,IF-F,ICC/IF,ELISA |
| Reactivity | Human,Rat,Mouse |

Performance

| | |
|---------------------|--|
| Conjugation | Unconjugated |
| Modification | Unmodified |
| Isotype | IgG |
| Clonality | Polyclonal |
| Form | Liquid |
| Storage | Store at 4°C short term. Aliquot and store at -20°C long term. Avoid freeze/thaw cycles. |
| Buffer | Liquid in PBS containing 50% glycerol, 0.5% BSA and 0.02% New type preservative N. |
| Purification | Affinity purification |

Immunogen

| | |
|--------------------------|--|
| Gene Name | ATF6B |
| Alternative Names | ATF6B; CREBL1; G13; Cyclic AMP-dependent transcription factor ATF-6 beta; cAMP-dependent transcription factor ATF-6 beta; Activating transcription factor 6 beta; ATF6-beta; Protein G13; cAMP response element-binding protein-related protein; |
| Gene ID | 1388.0 |
| SwissProt ID | Q99941.The antiserum was produced against synthesized peptide derived from human ATF6B. AA range:401-450 |

Application

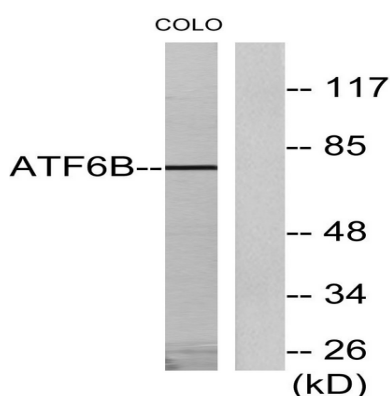
| | |
|-------------------------|---|
| Dilution Ratio | WB 1:500-1:2000, ELISA 1:20000, IF-P/IF-F/ICC/IF 1:50-200 |
| Molecular Weight | 90kDa |

Background

The protein encoded by this gene is a transcription factor in the unfolded protein response (UPR) pathway during ER stress. Either as a homodimer or as a heterodimer with ATF6-alpha, the encoded protein binds to the ER stress response element, interacting with nuclear transcription factor Y to activate UPR target genes. The protein is normally found in the membrane of the endoplasmic reticulum; however, under ER stress, the N-terminal cytoplasmic domain is cleaved from the rest of the protein and translocates to the nucleus. Two transcript variants encoding different isoforms have been found for this gene. [provided by RefSeq, Oct 2008],domain:The basic domain functions as a nuclear localization signal.,domain:The basic leucine-zipper domain is sufficient for association with the NF-Y trimer and binding to ERSE.,function:Transcriptional factor that acts in the unfolded protein response (UPR) pathway by activating UPR target genes induced during ER stress. Binds DNA on the 5'-CCAC[GA]-3' half of the ER stress response element (ERSE) (5'-CCAATN(9)CCAC[GA]-3') when NF-Y is bound to ERSE.,PTM:During unfolded protein response an approximative 60 kDa fragment containing the cytoplasmic transcription factor domain is released by proteolysis. The cleavage is probably performed sequentially by site-1 and site-2 proteases.,PTM:N-glycosylated.,similarity:Belongs to the bZIP family.,similarity:Belongs to the bZIP family. ATF subfamily.,similarity:Contains 1 bZIP domain.,subcellular location:Under ER stress the cleaved N-terminal cytoplasmic domain translocates into the nucleus.,subunit:Homodimer and heterodimer with ATF6-alpha. The dimer interacts with the nuclear transcription factor Y (NF-Y) trimer through direct binding to NF-Y subunit C (NF-YC).,tissue specificity:Ubiquitous.,

Research Area

Image Data



Western blot analysis of lysates from COLO205 cells, using ATF6B Antibody. The lane on the right is blocked with the synthesized peptide.

Product Name: ATF-6 β Rabbit Polyclonal Antibody
Catalog #: APRab07280



Western Blot analysis of various cells using ATF-6 β Polyclonal Antibody

Note

For research use only.