

Summary

Production Name	ASCL1 Rabbit Polyclonal Antibody
Description	Rabbit Polyclonal Antibody
Host	Rabbit
Application	IHC-P,IF-P,IF-F,ICC/IF,ELISA
Reactivity	Human,Mouse,Rat

Performance

Conjugation	Unconjugated
Modification	Unmodified
Isotype	IgG
Clonality	Polyclonal
Form	Liquid
Storage	Store at 4°C short term. Aliquot and store at -20°C long term. Avoid freeze/thaw cycles.
Buffer	Liquid in PBS containing 50% glycerol, 0.5% BSA and 0.02% New type preservative N.
Purification	Affinity purification

Immunogen

Gene Name	ASCL1 ASH1 BHLHA46 HASH1
Alternative Names	Achaete-scute homolog 1 (ASH-1;hASH1;Class A basic helix-loop-helix protein 46;bHLHa46)
Gene ID	429.0
SwissProt ID	P50553.Synthetic peptide from human protein at AA range: 190-236

Application

Dilution Ratio	IHC-P 1:50-200, ELISA 1:10000-20000, IF-P/IF-F/ICC/IF 1:50-200
Molecular Weight	

Background

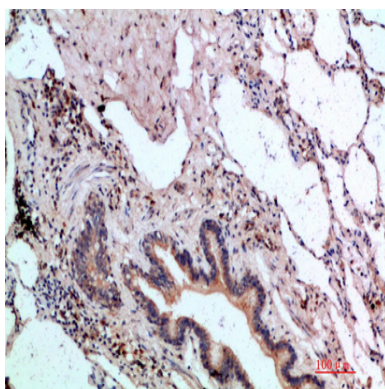
Product Name: ASCL1 Rabbit Polyclonal Antibody
Catalog #: APRab07211



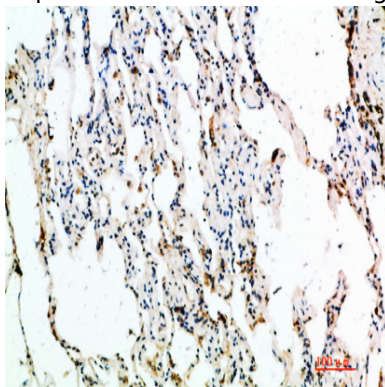
achaete-scute family bHLH transcription factor 1(ASCL1) Homo sapiens This gene encodes a member of the basic helix-loop-helix (BHLH) family of transcription factors. The protein activates transcription by binding to the E box (5'-CANNTG-3'). Dimerization with other BHLH proteins is required for efficient DNA binding. This protein plays a role in the neuronal commitment and differentiation and in the generation of olfactory and autonomic neurons. Mutations in this gene may contribute to the congenital central hypoventilation syndrome (CCHS) phenotype in rare cases. [provided by RefSeq, Jul 2008],function:May play a role at early stages of development of specific neural lineages in most regions of the CNS, and of several lineages in the PNS. Essential for the generation of olfactory and autonomic neurons. Activates transcription by binding to the E box (5'-CANNTG-3'),similarity:Contains 1 basic helix-loop-helix (bHLH) domain.,subunit:Efficient DNA binding requires dimerization with another bHLH protein. Forms a heterodimer with TCF3,

Research Area

Image Data

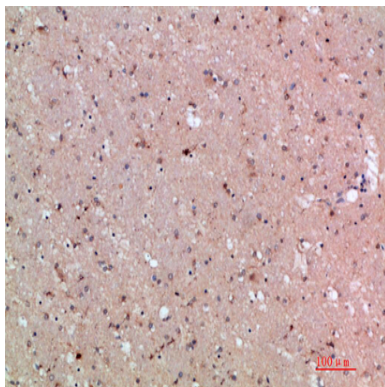


Immunohistochemical analysis of paraffin-embedded human-lung, antibody was diluted at 1:200



Immunohistochemical analysis of paraffin-embedded human-lung, antibody was diluted at 1:200

Product Name: ASCL1 Rabbit Polyclonal Antibody
Catalog #: APRab07211



Immunohistochemical analysis of paraffin-embedded human-brain, antibody was diluted at 1:200

Note

For research use only.