

Product Name: AS250 Rabbit Polyclonal Antibody
Catalog #: APRab07198



Summary

| | |
|------------------------|----------------------------------|
| Production Name | AS250 Rabbit Polyclonal Antibody |
| Description | Rabbit Polyclonal Antibody |
| Host | Rabbit |
| Application | WB,IHC-P,IF-P,IF-F,ICC/IF,ELISA |
| Reactivity | Human,Mouse |

Performance

| | |
|---------------------|--|
| Conjugation | Unconjugated |
| Modification | Unmodified |
| Isotype | IgG |
| Clonality | Polyclonal |
| Form | Liquid |
| Storage | Store at 4°C short term. Aliquot and store at -20°C long term. Avoid freeze/thaw cycles. |
| Buffer | Liquid in PBS containing 50% glycerol, 0.5% BSA and 0.02% New type preservative N. |
| Purification | Affinity purification |

Immunogen

| | |
|--------------------------|--|
| Gene Name | RALGAPA2 |
| Alternative Names | RALGAPA2; C20orf74; KIAA1272; Ral GTPase-activating protein subunit alpha-2; 250 kDa substrate of Akt; AS250; p220 |
| Gene ID | 57186.0 |
| SwissProt ID | Q2PPJ7.The antiserum was produced against synthesized peptide derived from human AS250. AA range:641-690 |

Application

| | |
|-------------------------|--|
| Dilution Ratio | WB 1:500-1:2000, IHC-P 1:100-1:300, IF-P/IF-F/ICC/IF 1:200-1:1000, ELISA 1:10000.Not yet tested in other applications. |
| Molecular Weight | 210kDa |

Product Name: AS250 Rabbit Polyclonal Antibody
Catalog #: APRab07198

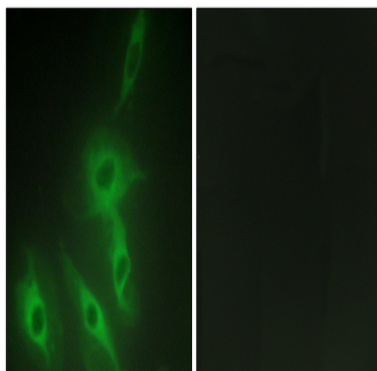


Background

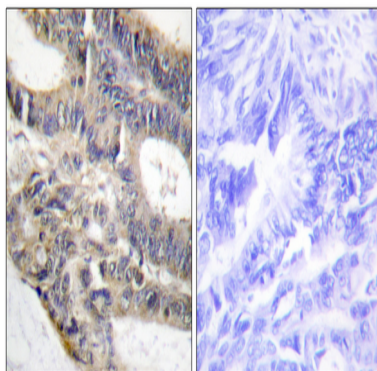
RALGAPA2 (Ral GTPase Activating Protein Catalytic Alpha Subunit 2) is a Protein Coding gene. Among its related pathways are Vesicle-mediated transport and Translocation of GLUT4 to the plasma membrane. GO annotations related to this gene include protein heterodimerization activity and GTPase activator activity. An important paralog of this gene is RAP1GAP. regulation of small GTPase mediated signal transduction,

Research Area

Image Data

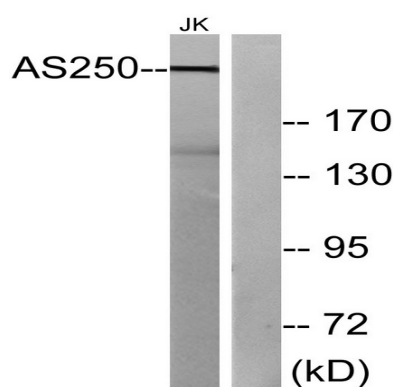


Immunofluorescence analysis of HeLa cells, using AS250 Antibody. The picture on the right is blocked with the synthesized peptide.



Immunohistochemistry analysis of paraffin-embedded human colon carcinoma tissue, using AS250 Antibody. The picture on the right is blocked with the synthesized peptide.

Product Name: AS250 Rabbit Polyclonal Antibody
Catalog #: APRab07198



Western blot analysis of lysates from Jurkat cells, using AS250 Antibody. The lane on the right is blocked with the synthesized peptide.

Note

For research use only.