

Product Name: Arylsulfatase I Rabbit Polyclonal Antibody
Catalog #: APRab07187

Summary

Production Name	Arylsulfatase I Rabbit Polyclonal Antibody
Description	Rabbit Polyclonal Antibody
Host	Rabbit
Application	WB,IHC-P,IF-P,IF-F,ICC/IF,ELISA
Reactivity	Human,Monkey

Performance

Conjugation	Unconjugated
Modification	Unmodified
Isotype	IgG
Clonality	Polyclonal
Form	Liquid
Storage	Store at 4°C short term. Aliquot and store at -20°C long term. Avoid freeze/thaw cycles.
Buffer	Liquid in PBS containing 50% glycerol, 0.5% BSA and 0.02% New type preservative N.
Purification	Affinity purification

Immunogen

Gene Name	ARSI
Alternative Names	ARSI; Arylsulfatase I; ASI
Gene ID	340075.0
SwissProt ID	Q5FYB1.The antiserum was produced against synthesized peptide derived from human ARSI. AA range:311-360

Application

Dilution Ratio	WB 1:500-1:2000, IHC-P 1:100-1:300, IF-P/IF-F/ICC/IF 1:200-1:1000, ELISA 1:40000.Not yet tested in other applications.
Molecular Weight	64kDa

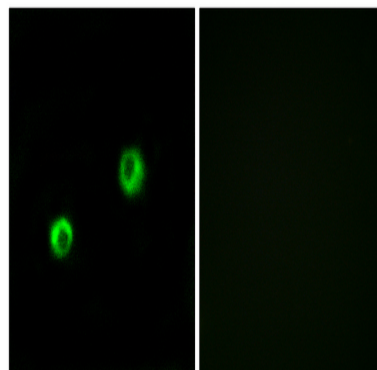
Product Name: Arylsulfatase I Rabbit Polyclonal Antibody
Catalog #: APRab07187

Background

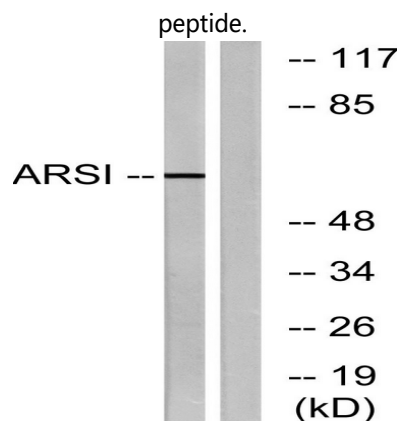
This gene encodes a protein that belongs to a large family of sulfatases that hydrolyze sulfate esters and sulfamates. Members of this family play a role in several cellular processes, including hormone synthesis, cell signaling in development and degradation of macromolecules. The protein encoded by this gene is thought to be secreted, and to function in extracellular space. [provided by RefSeq, Jul 2016],cofactor: Binds 1 calcium ion per subunit.,PTM: The conversion to 3-oxoalanine (also known as C-formylglycine, FGly), of a serine or cysteine residue in prokaryotes and of a cysteine residue in eukaryotes, is critical for catalytic activity.,similarity: Belongs to the sulfatase family.,

Research Area

Image Data

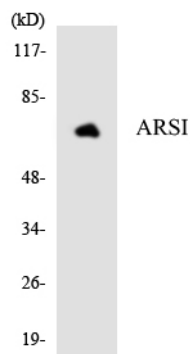


Immunofluorescence analysis of MCF7 cells, using ARSI Antibody. The picture on the right is blocked with the synthesized

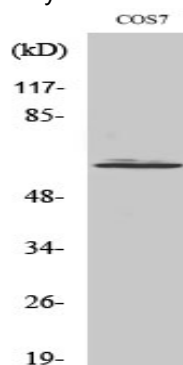


Western blot analysis of lysates from COS7 cells, using ARSI Antibody. The lane on the right is blocked with the synthesized peptide.

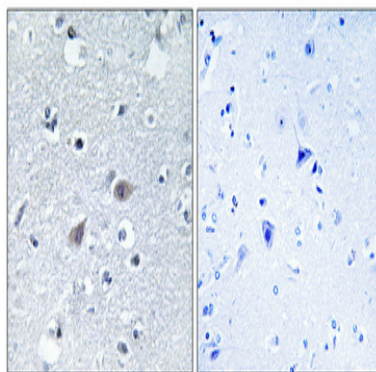
Product Name: Arylsulfatase I Rabbit Polyclonal Antibody
Catalog #: APRab07187



Western blot analysis of the lysates from HepG2 cells using ARSI antibody.



Western Blot analysis of various cells using Arylsulfatase I Polyclonal Antibody



Immunohistochemical analysis of paraffin-embedded Human brain. Antibody was diluted at 1:100 (4°,overnight) . High-pressure and temperature Tris-EDTA,pH8.0 was used for antigen retrieval. Negative contrl (right) obtained from antibody was pre-absorbed by immunogen peptide.

Note

For research use only.