

Product Name: Arrestin- β -1 Rabbit Polyclonal Antibody
Catalog #: APRab07171



Summary

Production Name	Arrestin- β -1 Rabbit Polyclonal Antibody
Description	Rabbit Polyclonal Antibody
Host	Rabbit
Application	WB,IHC-P,IF-P,IF-F,ICC/IF,ELISA
Reactivity	Human,Mouse,Rat

Performance

Conjugation	Unconjugated
Modification	Unmodified
Isotype	IgG
Clonality	Polyclonal
Form	Liquid
Storage	Store at 4°C short term. Aliquot and store at -20°C long term. Avoid freeze/thaw cycles.
Buffer	Liquid in PBS containing 50% glycerol, 0.5% BSA and 0.02% New type preservative N.
Purification	Affinity purification

Immunogen

Gene Name	ARRB1
Alternative Names	ARRB1; ARR1; Beta-arrestin-1; Arrestin beta-1
Gene ID	408.0
SwissProt ID	P49407. The antiserum was produced against synthesized peptide derived from human ARRB1. AA range:369-418

Application

Dilution Ratio	WB 1:500-1:2000, IHC-P 1:100-1:300, IF-P/IF-F/ICC/IF 1:200-1:1000, ELISA 1:10000. Not yet tested in other applications.
Molecular Weight	50kDa

Background

Product Name: Arrestin- β -1 Rabbit Polyclonal Antibody
Catalog #: APRab07171

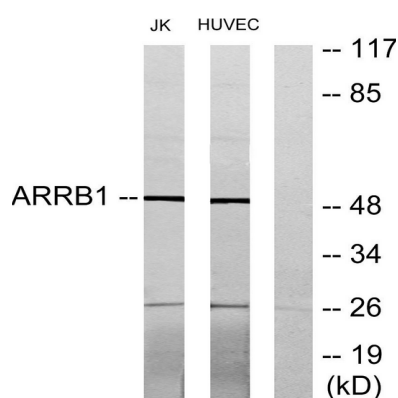


Members of arrestin/beta-arrestin protein family are thought to participate in agonist-mediated desensitization of G-protein-coupled receptors and cause specific dampening of cellular responses to stimuli such as hormones, neurotransmitters, or sensory signals. Arrestin beta 1 is a cytosolic protein and acts as a cofactor in the beta-adrenergic receptor kinase (BARK) mediated desensitization of beta-adrenergic receptors. Besides the central nervous system, it is expressed at high levels in peripheral blood leukocytes, and thus the BARK/beta-arrestin system is believed to play a major role in regulating receptor-mediated immune functions. Alternatively spliced transcripts encoding different isoforms of arrestin beta 1 have been described. [provided by RefSeq, Jan 2011],function:Regulates beta-adrenergic receptor function. Beta-arrestins seem to bind phosphorylated beta-adrenergic receptors, thereby causing a significant impairment of their capacity to activate G(S) proteins.,online information:Arrestin entry,similarity:Belongs to the arrestin family.,

Research Area

MAPK_ERK_Growth;MAPK_G_Protein;Chemokine;Endocytosis;

Image Data



Western blot analysis of lysates from Jurkat and HUVEC cells, using ARRB1 Antibody. The lane on the right is blocked with the synthesized peptide.

Note

For research use only.