

Summary

Production Name	ARALAR Rabbit Polyclonal Antibody
Description	Rabbit Polyclonal Antibody
Host	Rabbit
Application	WB,IHC-P,IF-P,IF-F,ICC/IF,ELISA
Reactivity	Human,Rat,Mouse

Performance

Conjugation	Unconjugated
Modification	Unmodified
Isotype	IgG
Clonality	Polyclonal
Form	Liquid
Storage	Store at 4°C short term. Aliquot and store at -20°C long term. Avoid freeze/thaw cycles.
Buffer	Liquid in PBS containing 50% glycerol, 0.5% BSA and 0.02% New type preservative N.
Purification	Affinity purification

Immunogen

Gene Name	SLC25A12
Alternative Names	SLC25A12; ARALAR1; Calcium-binding mitochondrial carrier protein Aralar1; Mitochondrial aspartate glutamate carrier 1; Solute carrier family 25 member 12
Gene ID	8604.0
SwissProt ID	O75746.The antiserum was produced against synthesized peptide derived from human CMC1. AA range:391-440

Application

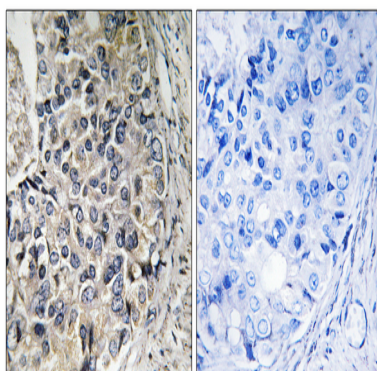
Dilution Ratio	WB 1:500-1:2000, IHC-P 1:100-1:300, ELISA 1:20000, IF-P/IF-F/ICC/IF 1:50-200
Molecular Weight	75kDa

Background

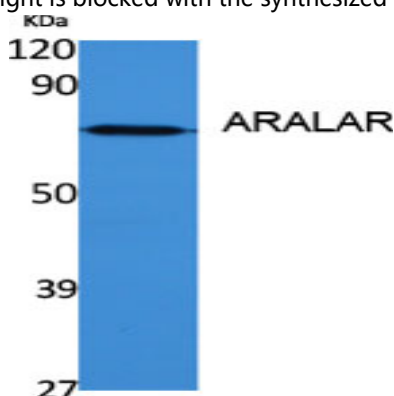
This gene encodes a calcium-binding mitochondrial carrier protein. The encoded protein localizes to the mitochondria and is involved in the exchange of aspartate for glutamate across the inner mitochondrial membrane. Polymorphisms in this gene may be associated with autism, and mutations in this gene may also be a cause of global cerebral hypomyelination. Alternatively spliced transcript variants have been observed for this gene. [provided by RefSeq, Apr 2012],function:Calcium-dependent mitochondrial aspartate and glutamate carrier. May have a function in the urea cycle.,miscellaneous:Binds calcium.,similarity:Belongs to the mitochondrial carrier family.,similarity:Contains 3 Solcar repeats.,similarity:Contains 4 EF-hand domains.,tissue specificity:High levels in heart and skeletal muscle, low in brain and very low in kidney.,

Research Area

Image Data

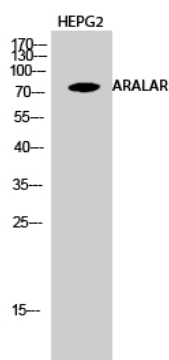


Immunohistochemistry analysis of paraffin-embedded human prostate carcinoma tissue, using CMC1 Antibody. The picture on the right is blocked with the synthesized peptide.



Western Blot analysis of various cells using ARALAR Polyclonal Antibody diluted at 1: 1000

Product Name: ARALAR Rabbit Polyclonal Antibody
Catalog #: APRab07093



Western Blot analysis of HEPG2 cells using ARALAR Polyclonal Antibody diluted at 1: 1000

Note

For research use only.