

## Summary

<b>Production Name</b>	APLF Rabbit Polyclonal Antibody
<b>Description</b>	Rabbit Polyclonal Antibody
<b>Host</b>	Rabbit
<b>Application</b>	WB,IHC-P,IF-P,IF-F,ICC/IF,ELISA
<b>Reactivity</b>	Human,Mouse

## Performance

<b>Conjugation</b>	Unconjugated
<b>Modification</b>	Unmodified
<b>Isotype</b>	IgG
<b>Clonality</b>	Polyclonal
<b>Form</b>	Liquid
<b>Storage</b>	Store at 4°C short term. Aliquot and store at -20°C long term. Avoid freeze/thaw cycles.
<b>Buffer</b>	Liquid in PBS containing 50% glycerol, 0.5% BSA and 0.02% New type preservative N.
<b>Purification</b>	Affinity purification

## Immunogen

<b>Gene Name</b>	APLF
<b>Alternative Names</b>	APLF; C2orf13; PALF; XIP1; Aprataxin and PNK-like factor; Apurinic-apyrimidinic endonuclease APLF; PNK and APTX-like FHA domain-containing protein; XRCC1-interacting protein 1
<b>Gene ID</b>	200558.0
<b>SwissProt ID</b>	Q8IW19.The antiserum was produced against synthesized peptide derived from human APLF. AA range:82-131

## Application

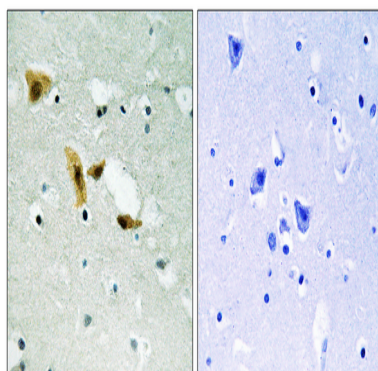
<b>Dilution Ratio</b>	WB 1:500-1:2000, IHC-P 1:100-1:300, ELISA 1:40000, IF-P/IF-F/ICC/IF 1:50-200
<b>Molecular Weight</b>	57kDa

## Background

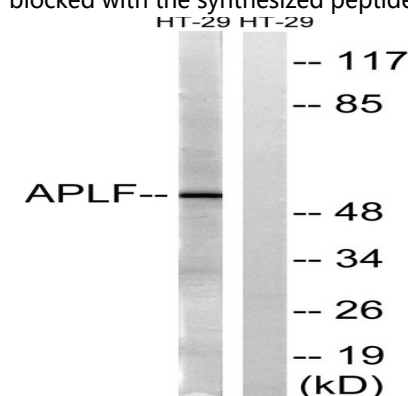
C2ORF13 is a component of the cellular response to chromosomal DNA single- and double-strand breaks (Iles et al., 2007 [PubMed 17353262]).[supplied by OMIM, Mar 2008],domain:The FHA-like domain mediates interaction with XRCC1 and XRCC4.,function:Involved in single-strand and double-strand DNA break repair.,PTM:Phosphorylated in an ATM-dependent manner upon double-strand DNA break.,similarity:Contains 1 FHA-like domain.,similarity:Contains 2 C2H2-type zinc fingers.,subcellular location:Colocalizes with XRCC1 at sites of DNA damage.,subunit:Interacts with XRCC1. May also interact with XRCC4 and XRCC5.,

## Research Area

## Image Data



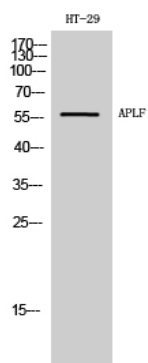
Immunohistochemistry analysis of paraffin-embedded human brain tissue, using APLF Antibody. The picture on the right is blocked with the synthesized peptide.



Western blot analysis of lysates from HT-29 cells, using APLF Antibody. The lane on the right is blocked with the synthesized peptide.

**Product Name: APLF Rabbit Polyclonal Antibody**  
**Catalog #: APRab07011**

---



Western Blot analysis of HT-29 cells using APLF Polyclonal Antibody

**Note**

For research use only.