

Product Name: APC5 Rabbit Polyclonal Antibody
Catalog #: APRab07000

Summary

Production Name	APC5 Rabbit Polyclonal Antibody
Description	Rabbit Polyclonal Antibody
Host	Rabbit
Application	WB,ELISA
Reactivity	Human,Rat,Mouse

Performance

Conjugation	Unconjugated
Modification	Unmodified
Isotype	IgG
Clonality	Polyclonal
Form	Liquid
Storage	Store at 4°C short term. Aliquot and store at -20°C long term. Avoid freeze/thaw cycles.
Buffer	Liquid in PBS containing 50% glycerol, 0.5% BSA and 0.02% New type preservative N.
Purification	Affinity purification

Immunogen

Gene Name	ANAPC5
Alternative Names	ANAPC5; APC5; Anaphase-promoting complex subunit 5; APC5; Cyclosome subunit 5
Gene ID	51433.0
SwissProt ID	Q9UJX4.The antiserum was produced against synthesized peptide derived from human ANAPC5. AA range:151-200

Application

Dilution Ratio	WB 1:500-1:2000, ELISA 1:5000.Not yet tested in other applications.
Molecular Weight	85kDa

Background

Product Name: APC5 Rabbit Polyclonal Antibody
Catalog #: AP Rab07000

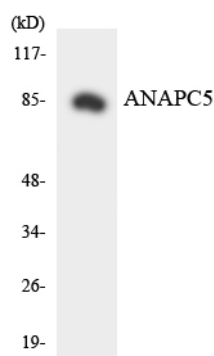


This gene encodes a tetratricopeptide repeat-containing component of the anaphase promoting complex/cyclosome (APC/C), a large E3 ubiquitin ligase that controls cell cycle progression by targeting a number of cell cycle regulators such as B-type cyclins for 26S proteasome-mediated degradation through ubiquitination. The encoded protein is required for the proper ubiquitination function of APC/C and for the interaction of APC/C with transcription coactivators. It also interacts with polyA binding protein and represses internal ribosome entry site-mediated translation. Multiple transcript variants encoding different isoforms have been found for this gene. These differences cause translation initiation at a downstream AUG and result in a shorter protein (isoform b), compared to isoform a. [provided by RefSeq, Nov 2008],function:Component of the anaphase promoting complex/cyclosome (APC/C), a cell cycle-regulated ubiquitin ligase that controls progression through mitosis and the G1 phase of the cell cycle.,pathway:Protein modification; protein ubiquitination.,similarity:Belongs to the APC5 family.,similarity:Contains 4 TPR repeats.,subunit:The APC/C is composed of at least 11 subunits.,

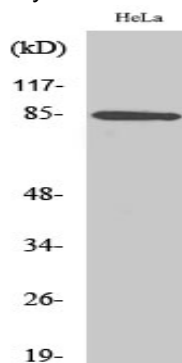
Research Area

Cell_Cycle_G1S;Cell_Cycle_G2M_DNA;Oocyte meiosis;Ubiquitin mediated proteolysis;Progesterone-mediated oocyte maturation;

Image Data



Western blot analysis of the lysates from HeLa cells using ANAPC5 antibody.



Western Blot analysis of various cells using APC5 Polyclonal Antibody

Product Name: APC5 Rabbit Polyclonal Antibody
Catalog #: APRab07000



Note

For research use only.