

**Product Name: AP-2γ Rabbit Polyclonal Antibody**  
**Catalog #: APRab06980**



## Summary

|                        |                                  |
|------------------------|----------------------------------|
| <b>Production Name</b> | AP-2γ Rabbit Polyclonal Antibody |
| <b>Description</b>     | Rabbit Polyclonal Antibody       |
| <b>Host</b>            | Rabbit                           |
| <b>Application</b>     | WB,IHC-P,IF-P,IF-F,ICC/IF,ELISA  |
| <b>Reactivity</b>      | Human,Mouse,Rat                  |

## Performance

|                     |  |
|---------------------|--|
| <b>Conjugation</b>  | Unconjugated   |
| <b>Modification</b> | Unmodified   |
| <b>Isotype</b>      | IgG  |
| <b>Clonality</b>    | Polyclonal   |
| <b>Form</b>         | Liquid   |
| <b>Storage</b>      | Store at 4°C short term. Aliquot and store at -20°C long term. Avoid freeze/thaw cycles. |
| <b>Buffer</b>       | Liquid in PBS containing 50% glycerol, 0.5% BSA and 0.02% New type preservative N.       |
| <b>Purification</b> | Affinity purification  |

## Immunogen

|                          |   |
|--------------------------|---|
| <b>Gene Name</b>         | TFAP2C  |
| <b>Alternative Names</b> | TFAP2C; Transcription factor AP-2 gamma; AP2-gamma; Activating enhancer-binding protein 2 gamma; Transcription factor ERF-1 |
| <b>Gene ID</b>           | 7022.0  |
| <b>SwissProt ID</b>      | Q92754.The antiserum was produced against synthesized peptide derived from human AP2C. AA range:401-450                     |

## Application

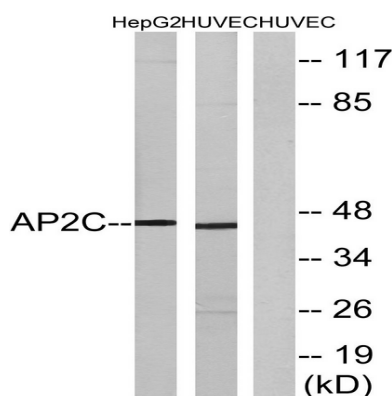
|                         |  |
|-------------------------|--|
| <b>Dilution Ratio</b>   | WB 1:500-1:2000, IHC-P 1:100-1:300, ELISA 1:40000, IF-P/IF-F/ICC/IF 1:50-200 |
| <b>Molecular Weight</b> | 45kDa  |

## Background

transcription factor AP-2 gamma(TFAP2C) Homo sapiens The protein encoded by this gene is a sequence-specific DNA-binding transcription factor involved in the activation of several developmental genes. The encoded protein can act as either a homodimer or heterodimer with other family members and is induced during retinoic acid-mediated differentiation. It plays a role in the development of the eyes, face, body wall, limbs, and neural tube. [provided by RefSeq, Jul 2008],domain:The WW-binding motif mediates interaction with WWOX.,function:Sequence-specific DNA-binding protein that interacts with inducible viral and cellular enhancer elements to regulate transcription of selected genes. AP-2 factors bind to the consensus sequence 5'-GCCNNNGGC-3' and activate genes involved in a large spectrum of important biological functions including proper eye, face, body wall, limb and neural tube development. They also suppress a number of genes including MCAM/MUC18, C/EBP alpha and MYC.,induction:During retinoic acid-mediated differentiation.,online information:Activatin protein 2 entry,PTM:Sumoylated on Lys-10; which inhibits transcriptional activity.,similarity:Belongs to the AP-2 family.,subunit:Binds DNA as a dimer. Can form homodimers or heterodimers with other AP-2 family members (By similarity). Interacts with WWOX. Interacts with CITED4. Interacts with UBE2L,

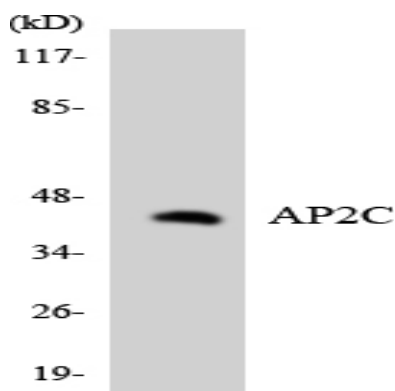
## Research Area

## Image Data

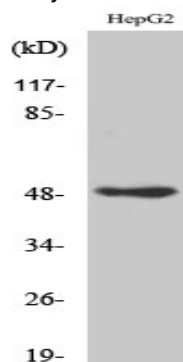


Western blot analysis of lysates from HepG2 and HUVEC cells, using AP2C Antibody. The lane on the right is blocked with the synthesized peptide.

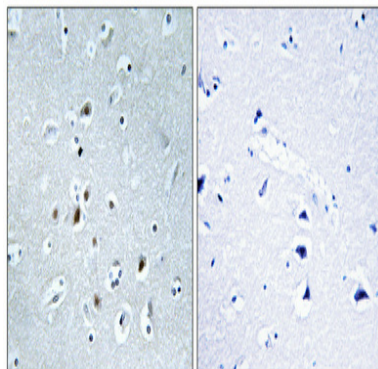
**Product Name: AP-2 $\gamma$  Rabbit Polyclonal Antibody**  
**Catalog #: APRab06980**



Western blot analysis of the lysates from K562 cells using AP2C antibody.

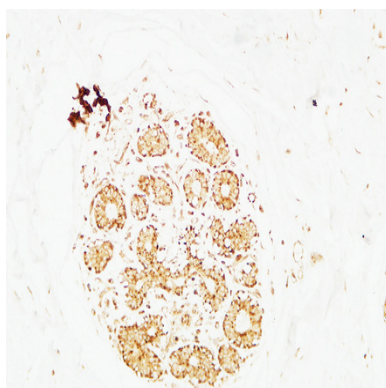


Western Blot analysis of various cells using AP-2 $\gamma$  Polyclonal Antibody cells nucleus extracted by Minute TM Cytoplasmic and Nuclear Fractionation kit (SC-003, Invent biotech, MN, USA) .

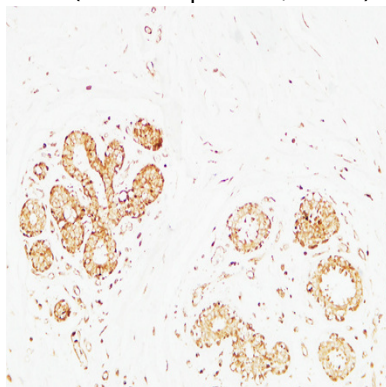


Immunohistochemical analysis of paraffin-embedded Human brain. Antibody was diluted at 1:100 (4 $^{\circ}$ , overnight) . High-pressure and temperature Tris-EDTA, pH 8.0 was used for antigen retrieval. Negative control (right) obtained from antibody was pre-absorbed by immunogen peptide.

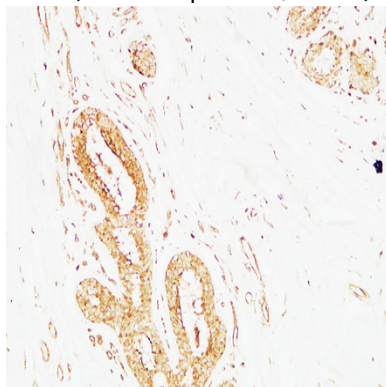
**Product Name: AP-2γ Rabbit Polyclonal Antibody**  
**Catalog #: APRab06980**



Immunohistochemical analysis of paraffin-embedded Human breast. 1, Antibody was diluted at 1:200 (4°,overnight) . 2, High-pressure and temperature EDTA, pH8.0 was used for antigen retrieval. 3,Secondary antibody was diluted at 1:200 (room temperature, 30min) .



Immunohistochemical analysis of paraffin-embedded Human breast. 1, Antibody was diluted at 1:200 (4°,overnight) . 2, High-pressure and temperature EDTA, pH8.0 was used for antigen retrieval. 3,Secondary antibody was diluted at 1:200 (room temperature, 30min) .



Immunohistochemical analysis of paraffin-embedded Human breast. 1, Antibody was diluted at 1:200 (4°,overnight) . 2, High-pressure and temperature EDTA, pH8.0 was used for antigen retrieval. 3,Secondary antibody was diluted at 1:200 (room temperature, 30min) .

**Product Name: AP-2γ Rabbit Polyclonal Antibody**  
**Catalog #: APRab06980**

---



**Note**

For research use only.