

Summary

| | |
|------------------------|---------------------------------|
| Production Name | ANT4 Rabbit Polyclonal Antibody |
| Description | Rabbit Polyclonal Antibody |
| Host | Rabbit |
| Application | WB,IHC-P,IF-P,IF-F,ICC/IF,ELISA |
| Reactivity | Human,Mouse |

Performance

| | |
|---------------------|--|
| Conjugation | Unconjugated |
| Modification | Unmodified |
| Isotype | IgG |
| Clonality | Polyclonal |
| Form | Liquid |
| Storage | Store at 4°C short term. Aliquot and store at -20°C long term. Avoid freeze/thaw cycles. |
| Buffer | Liquid in PBS containing 50% glycerol, 0.5% BSA and 0.02% New type preservative N. |
| Purification | Affinity purification |

Immunogen

| | |
|--------------------------|---|
| Gene Name | SLC25A31 |
| Alternative Names | SLC25A31; AAC4; ANT4; SFEC; ADP/ATP translocase 4; ADP; ATP carrier protein 4; Adenine nucleotide translocator 4; ANT 4; Solute carrier family 25 member 31; Sperm flagellar energy carrier protein |
| Gene ID | 83447.0 |
| SwissProt ID | Q9H0C2.The antiserum was produced against synthesized peptide derived from human SLC25A31. AA range:131-180 |

Application

| | |
|-----------------------|--|
| Dilution Ratio | WB 1:500-1:2000, IHC-P 1:100-1:300, IF-P/IF-F/ICC/IF 1:200-1:1000, ELISA 1:40000.Not yet tested in other applications. |
|-----------------------|--|

Product Name: ANT4 Rabbit Polyclonal Antibody
Catalog #: AP Rab06953



Molecular Weight 35kDa

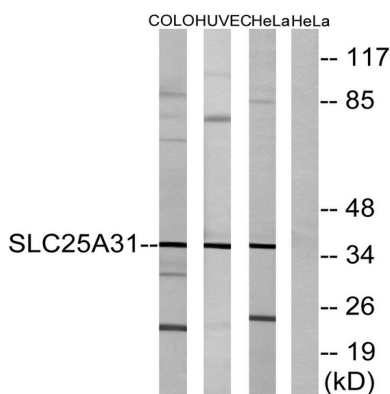
Background

The protein encoded by this gene is a member of the ADP/ATP carrier family of proteins that exchange cytosolic ADP for matrix ATP in the mitochondria. Cells over-expressing this gene have been shown to display an anti-apoptotic phenotype. This protein is also thought to play a role in spermatogenesis, where it is believed to associate with a part of the flagellar cytoskeleton and with glycolytic enzymes. Male mice with mutations in the mouse ortholog of this gene are sterile and spermatocytes display an early meiotic arrest phenotype. Alternative splicing results in multiple transcript variants encoding different isoforms. [provided by RefSeq, Jan 2016],function:Catalyzes the exchange of ADP and ATP across the mitochondrial inner membrane. May serve to mediate energy generating and energy consuming processes in the distal flagellum, possibly as a nucleotide shuttle between flagellar glycolysis, protein phosphorylation and mechanisms of motility.,similarity:Belongs to the mitochondrial carrier family.,similarity:Contains 3 Solcar repeats.,subcellular location:In sperm flagellum this protein is located in the fibrous sheath, a non-mitochondrial region.,tissue specificity:Expressed in brain, liver, sperm and testis.,

Research Area

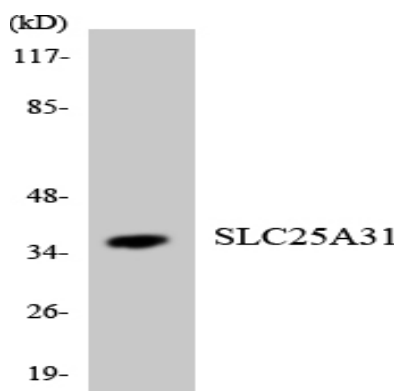
Calcium;Parkinson's disease;Huntington's disease;

Image Data

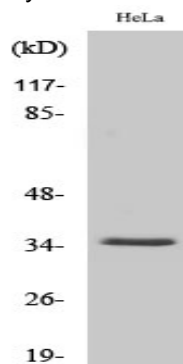


Western blot analysis of lysates from HeLa, HUVEC, and COLO cells, using SLC25A31 Antibody. The lane on the right is blocked with the synthesized peptide.

Product Name: ANT4 Rabbit Polyclonal Antibody
Catalog #: APRab06953



Western blot analysis of the lysates from K562 cells using SLC25A31 antibody.



Western Blot analysis of various cells using ANT4 Polyclonal Antibody diluted at 1: 500

Note

For research use only.