

Product Name: Annexin I Rabbit Polyclonal Antibody
Catalog #: APRab06920



Summary

Production Name	Annexin I Rabbit Polyclonal Antibody
Description	Rabbit Polyclonal Antibody
Host	Rabbit
Application	IF-P,IF-F,ICC/IF,WB,IHC-P,ELISA
Reactivity	Human,Rat,Mouse

Performance

Conjugation	Unconjugated
Modification	Unmodified
Isotype	IgG
Clonality	Polyclonal
Form	Liquid
Storage	Store at 4°C short term. Aliquot and store at -20°C long term. Avoid freeze/thaw cycles.
Buffer	Liquid in PBS containing 50% glycerol, 0.5% BSA and 0.02% New type preservative N.
Purification	Affinity purification

Immunogen

Gene Name	ANXA1
Alternative Names	Annexin A1 (Annexin I) (Annexin-1) (Calpactin II) (Calpactin-2) (Chromobindin-9) (Lipocortin I) (Phospholipase A2 inhibitory protein) (p35)
Gene ID	301.0
SwissProt ID	P04083.Synthetic peptide from human protein at AA range: 130-180

Application

Dilution Ratio	IF-P/IF-F/ICC/IF 1:50-200, WB 1:500-2000, IHC-P 1:500-200, ELISA 1:10000-20000
Molecular Weight	38kDa

Background

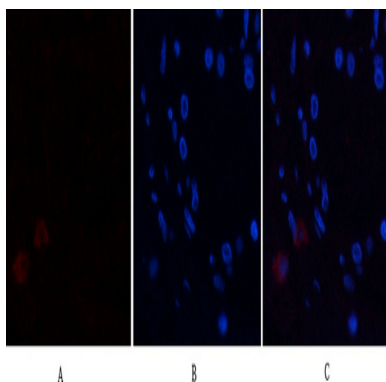
Product Name: Annexin I Rabbit Polyclonal Antibody
Catalog #: APRab06920



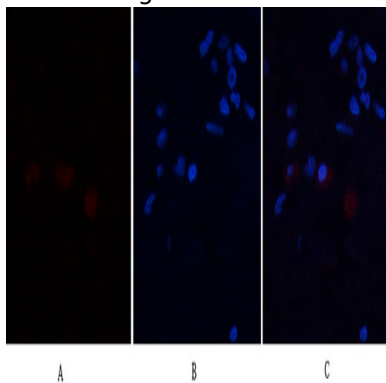
This gene encodes a membrane-localized protein that binds phospholipids. This protein inhibits phospholipase A2 and has anti-inflammatory activity. Loss of function or expression of this gene has been detected in multiple tumors. [provided by RefSeq, Dec 2014],domain:A pair of annexin repeats may form one binding site for calcium and phospholipid.,function:Calcium/phospholipid-binding protein which promotes membrane fusion and is involved in exocytosis. This protein regulates phospholipase A2 activity. It seems to bind from two to four calcium ions with high affinity.,PTM:Phosphorylated by protein kinase C, epidermal growth factor receptor/kinase and TRPM7. Phosphorylation results in loss of the inhibitory activity.,similarity:Belongs to the annexin family.,similarity:Contains 1 annexin repeat.,similarity:Contains 2 annexin repeats.,similarity:Contains 4 annexin repeats.,subcellular location:Found in the cilium, nucleus and basolateral cell membrane of ciliated cells in the tracheal endothelium (By similarity). Found in the cytoplasm of type II pneumocytes and alveolar macrophages.,subunit:Homodimer in placenta (20%); linked by transglutamylation. Interacts with DYSF.,

Research Area

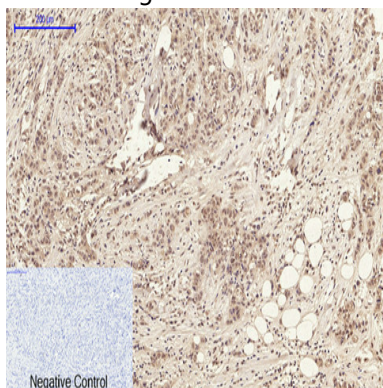
Image Data



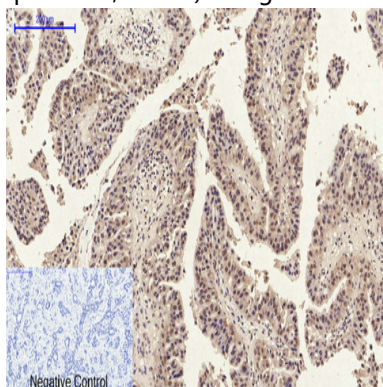
Immunofluorescence analysis of human-breast tissue. 1,Annexin I Polyclonal Antibody (red) was diluted at 1:200 (4°C,overnight) . 2, Cy3 labeled Secondary antibody was diluted at 1:300 (room temperature, 50min) .3, Picture B: DAPI (blue) 10min. Picture A:Target. Picture B: DAPI. Picture C: merge of A+B



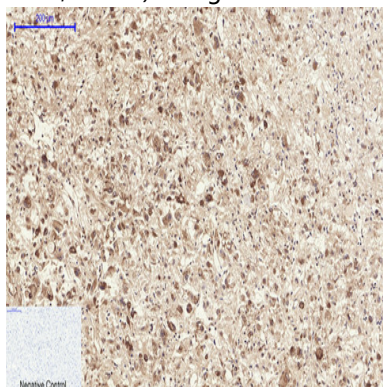
Immunofluorescence analysis of human-breast tissue. 1,Annexin I Polyclonal Antibody (red) was diluted at 1:200 (4°C,overnight) . 2, Cy3 labeled Secondary antibody was diluted at 1:300 (room temperature, 50min) .3, Picture B: DAPI (blue) 10min. Picture A:Target. Picture B: DAPI. Picture C: merge of A+B



Immunohistochemical analysis of paraffin-embedded Human-breast-cancer tissue. 1,Annexin I Polyclonal Antibody was diluted at 1:200 (4°C,overnight) . 2, Sodium citrate pH 6.0 was used for antibody retrieval (>98°C,20min) . 3,Secondary antibody was diluted at 1:200 (room temperature, 30min) . Negative control was used by secondary antibody only.



Immunohistochemical analysis of paraffin-embedded Human-liver-cancer tissue. 1,Annexin I Polyclonal Antibody was diluted at 1:200 (4°C,overnight) . 2, Sodium citrate pH 6.0 was used for antibody retrieval (>98°C,20min) . 3,Secondary antibody was diluted at 1:200 (room temperature, 30min) . Negative control was used by secondary antibody only.

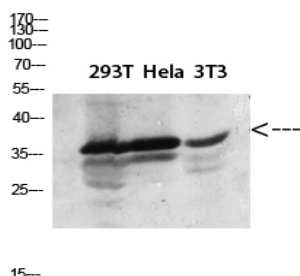


Immunohistochemical analysis of paraffin-embedded Human-kidney-cancer tissue. 1,Annexin I Polyclonal Antibody was diluted at 1:200 (4°C,overnight) . 2, Sodium citrate pH 6.0 was used for antibody retrieval (>98°C,20min) . 3,Secondary

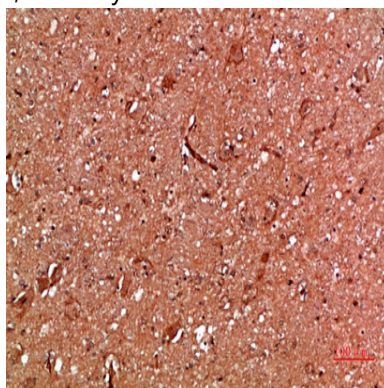
Product Name: Annexin I Rabbit Polyclonal Antibody
Catalog #: APRab06920



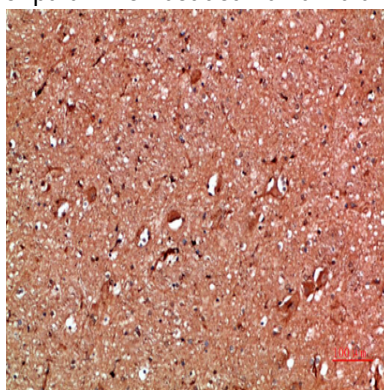
antibody was diluted at 1:200 (room temperature, 30min) . Negative control was used by secondary antibody only.



Western blot analysis of 293T Hela lysate, antibody was diluted at 2000. Secondary antibody was diluted at 1:20000

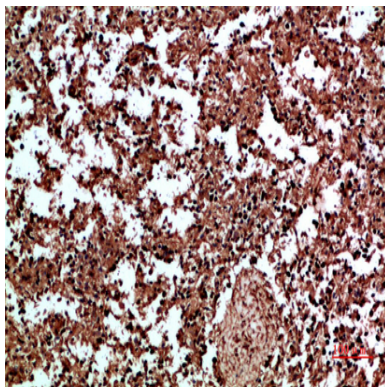


Immunohistochemical analysis of paraffin-embedded human-brain, antibody was diluted at 1:200



Immunohistochemical analysis of paraffin-embedded human-brain, antibody was diluted at 1:200

Product Name: Annexin I Rabbit Polyclonal Antibody
Catalog #: APRab06920



Immunohistochemical analysis of paraffin-embedded human-spleen, antibody was diluted at 1:200

Note

For research use only.