

Product Name: ANKRD30A Rabbit Polyclonal Antibody
Catalog #: APRab06906



Summary

Production Name	ANKRD30A Rabbit Polyclonal Antibody
Description	Rabbit Polyclonal Antibody
Host	Rabbit
Application	WB,IHC-P,IF-P,IF-F,ICC/IF,ELISA
Reactivity	Human,Rat,Mouse

Performance

Conjugation	Unconjugated
Modification	Unmodified
Isotype	IgG
Clonality	Polyclonal
Form	Liquid
Storage	Store at 4°C short term. Aliquot and store at -20°C long term. Avoid freeze/thaw cycles.
Buffer	Liquid in PBS containing 50% glycerol, 0.5% BSA and 0.02% New type preservative N.
Purification	Affinity purification

Immunogen

Gene Name	ANKRD30A
Alternative Names	ANKRD30A; Ankyrin repeat domain-containing protein 30A; Serologically defined breast cancer antigen NY-BR-1
Gene ID	91074.0
SwissProt ID	Q9BXX3.The antiserum was produced against synthesized peptide derived from human AN30A. AA range:1041-1090

Application

Dilution Ratio	WB 1:500-1:2000, IHC-P 1:100-1:300, ELISA 1:5000, IF-P/IF-F/ICC/IF 1:50-200
Molecular Weight	153kDa

Product Name: ANKRD30A Rabbit Polyclonal Antibody
Catalog #: AP Rab06906

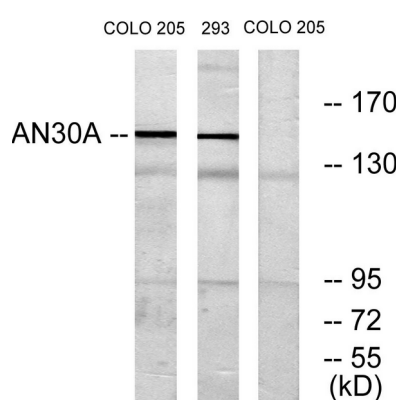


Background

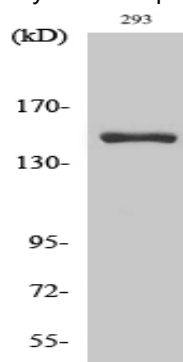
similarity:Contains 6 ANK repeats.,tissue specificity:Mainly expressed in breast and testis. A very faint signal is detected in placenta. Also expressed in many breast cancer cells.,similarity:Contains 6 ANK repeats.,tissue specificity:Mainly expressed in breast and testis. A very faint signal is detected in placenta. Also expressed in many breast cancer cells.,

Research Area

Image Data



Western blot analysis of lysates from 293 and COLO cells, using AN30A Antibody. The lane on the right is blocked with the synthesized peptide.



Western Blot analysis of various cells using ANKRD30A Polyclonal Antibody diluted at 1: 2000 cells nucleus extracted by Minute TM Cytoplasmic and Nuclear Fractionation kit (SC-003, Invent biotech, MN, USA) .

Note

For research use only.