

Summary

Production Name	Amylase Rabbit Polyclonal Antibody
Description	Rabbit Polyclonal Antibody
Host	Rabbit
Application	WB,IHC-P,IF-P,IF-F,ICC/IF,ELISA
Reactivity	Human,Mouse,Rat

Performance

Conjugation	Unconjugated
Modification	Unmodified
Isotype	IgG
Clonality	Polyclonal
Form	Liquid
Storage	Store at 4°C short term. Aliquot and store at -20°C long term. Avoid freeze/thaw cycles.
Buffer	Liquid in PBS containing 50% glycerol, 0.5% BSA and 0.02% New type preservative N.
Purification	Affinity purification

Immunogen

Gene Name	AMY1A AMY1A; AMY1; AMY1B; AMY1; AMY1C; AMY1; Alpha-amylase 1; 1,4-alpha-D-glucan glucanohydrolase 1; Salivary alpha-amylase; AMY2A; Pancreatic alpha-amylase; PA;1,4-alpha-D-glucan glucanohydrolase; AMY2B; Alpha-amylase 2B; 1,4-alpha-D-glucan glucanohydrolase 2B; Carcinoid alpha-amylase
Alternative Names	
Gene ID	276.0
SwissProt ID	P04745.The antiserum was produced against synthesized peptide derived from the N-terminal region of human AMY1/2. AA range:61-110

Application

Dilution Ratio	WB 1:500-1:2000, IHC-P 1:100-300, ELISA 1:20000, IF-P/IF-F/ICC/IF 1:50-200
Molecular Weight	60kDa

Product Name: Amylase Rabbit Polyclonal Antibody
Catalog #: APRab06864



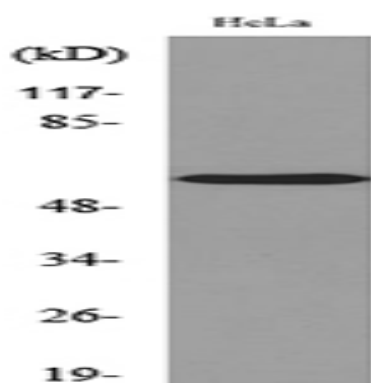
Background

Amylases are secreted proteins that hydrolyze 1,4-alpha-glucoside bonds in oligosaccharides and polysaccharides, and thus catalyze the first step in digestion of dietary starch and glycogen. The human genome has a cluster of several amylase genes that are expressed at high levels in either salivary gland or pancreas. This gene encodes an amylase isoenzyme produced by the salivary gland. Alternative splicing results in multiple transcript variants encoding the same protein. [provided by RefSeq, Jul 2008],catalytic activity:Endohydrolysis of (1->4)-alpha-D-glucosidic linkages in oligosaccharides and polysaccharides.,cofactor:Binds 1 calcium ion per subunit.,cofactor:Binds 1 chloride ion per subunit.,online information:Amylase entry,similarity:Belongs to the glycosyl hydrolase 13 family.,subunit:Monomer.,

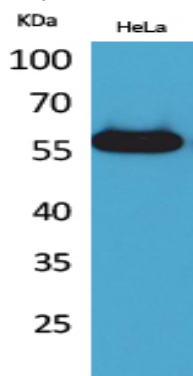
Research Area

Starch and sucrose metabolism;

Image Data

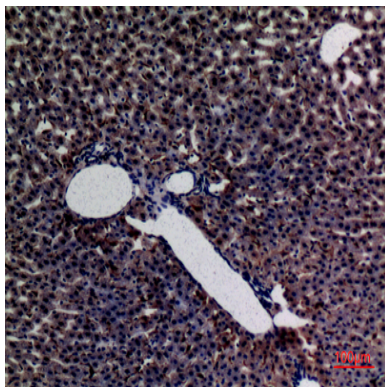


Western blot analysis of lysate from HeLa cells, using AMY1/2 Antibody.

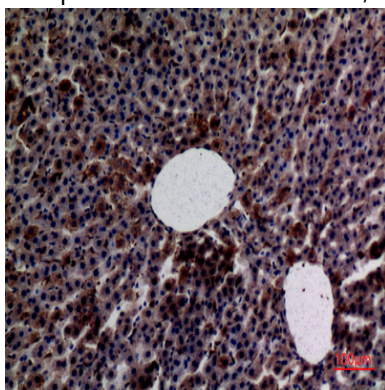


Western Blot analysis of HeLa cells using Amylase Polyclonal Antibody.. Secondary antibody was diluted at 1:20000

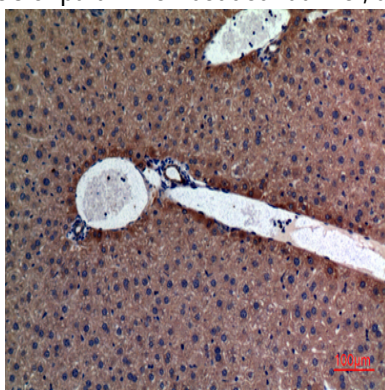
Product Name: Amylase Rabbit Polyclonal Antibody
Catalog #: APRab06864



Immunohistochemical analysis of paraffin-embedded rat-liver, antibody was diluted at 1:100



Immunohistochemical analysis of paraffin-embedded rat-liver, antibody was diluted at 1:100



Immunohistochemical analysis of paraffin-embedded mouse-liver, antibody was diluted at 1:100

Note

For research use only.