

Product Name: Amphiphysin II Rabbit Polyclonal Antibody
Catalog #: APRab06838

Summary

Production Name	Amphiphysin II Rabbit Polyclonal Antibody
Description	Rabbit Polyclonal Antibody
Host	Rabbit
Application	WB,IHC-P,IF-P,IF-F,ICC/IF,ELISA
Reactivity	Mouse,Rat

Performance

Conjugation	Unconjugated
Modification	Unmodified
Isotype	IgG
Clonality	Polyclonal
Form	Liquid
Storage	Store at 4°C short term. Aliquot and store at -20°C long term. Avoid freeze/thaw cycles.
Buffer	Liquid in PBS containing 50% glycerol, 0.5% BSA and 0.02% New type preservative N.
Purification	Affinity purification

Immunogen

Gene Name	BIN1
Alternative Names	BIN1; AMPHL; Myc box-dependent-interacting protein 1; Amphiphysin II; Amphiphysin-like protein; Box-dependent myc-interacting protein 1; Bridging integrator 1
Gene ID	274.0
SwissProt ID	O00499.Synthesized peptide derived from the C-terminal region of human Amphiphysin II.

Application

Dilution Ratio	WB 1:500-1:2000, IHC-P 1:100-1:300, ELISA 1:20000, IF-P/IF-F/ICC/IF 1:50-200
Molecular Weight	64kDa

Product Name: Amphiphysin II Rabbit Polyclonal Antibody
Catalog #: APRab06838

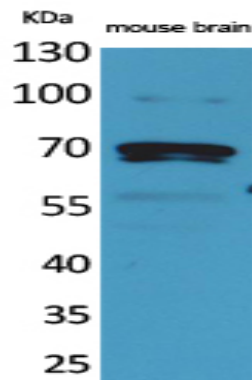
Background

This gene encodes several isoforms of a nucleocytoplasmic adaptor protein, one of which was initially identified as a MYC-interacting protein with features of a tumor suppressor. Isoforms that are expressed in the central nervous system may be involved in synaptic vesicle endocytosis and may interact with dynamin, synaptojanin, endophilin, and clathrin. Isoforms that are expressed in muscle and ubiquitously expressed isoforms localize to the cytoplasm and nucleus and activate a caspase-independent apoptotic process. Studies in mouse suggest that this gene plays an important role in cardiac muscle development. Alternate splicing of the gene results in several transcript variants encoding different isoforms. Aberrant splice variants expressed in tumor cell lines have also been described. [provided by RefSeq, Mar 2016], alternative products: Additional isoforms seem to exist, disease: Defects in BIN1 are the cause of centronuclear myopathy autosomal recessive (ARCNM) [MIM:255200]; also known as autosomal recessive myotubular myopathy. Centronuclear myopathies are congenital muscle disorders characterized by progressive muscular weakness and wasting involving mainly limb girdle, trunk, and neck muscles. It may also affect distal muscles. Weakness may be present during childhood or adolescence or may not become evident until the third decade of life. Ptosis is a frequent clinical feature. The most prominent histopathologic features include high frequency of centrally located nuclei in muscle fibers not secondary to regeneration, radial arrangement of sarcoplasmic strands around the central nuclei, and predominance and hypotrophy of type 1 fibers., function: May be involved in regulation of synaptic vesicle endocytosis. May act as a tumor suppressor and inhibits malignant cell transformation., PTM: Phosphorylated by protein kinase C., similarity: Contains 1 BAR domain., similarity: Contains 1 SH3 domain., subunit: Heterodimer with AMPH. Binds SH3GLB1 (By similarity). Binds to SYNJ1 and DNM1 through its SH3 domain, and to clathrin through a region outside of the SH3 domain. Also binds AP2A2. Interacts with the N-terminal transactivation domain of MYC in a manner requiring the integrity of the conserved MYC box regions 1 and 2. Interacts with BIN2. Interacts with HCV NS5A through its SH3 domain., tissue specificity: Ubiquitous. Highest expression in the brain and muscle. Isoform IIA is expressed only in the brain where it is concentrated in axon initial segments and nodes of Ranvier. Isoform BIN1 is widely expressed with highest expression in skeletal muscle.,

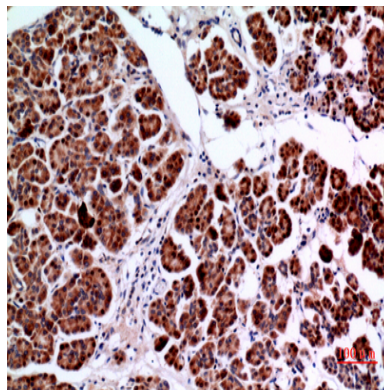
Research Area

Image Data

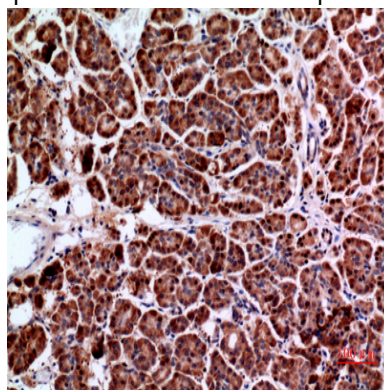
Product Name: Amphiphysin II Rabbit Polyclonal Antibody
Catalog #: APRab06838



Western Blot analysis of mouse brain cells using Amphiphysin II Polyclonal Antibody.. Secondary antibody was diluted at 1:20000

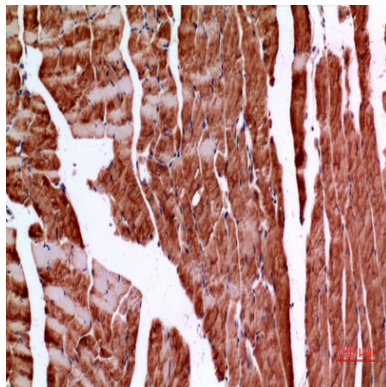


Immunohistochemical analysis of paraffin-embedded human-pancreas, antibody was diluted at 1:100

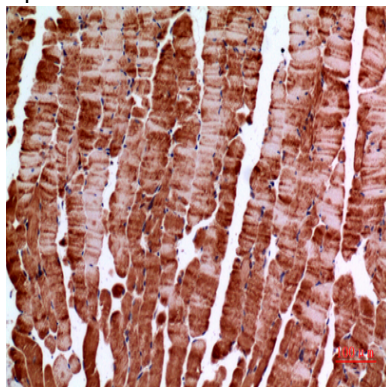


Immunohistochemical analysis of paraffin-embedded human-pancreas, antibody was diluted at 1:100

**Product Name: Amphiphysin II Rabbit Polyclonal
Antibody**
Catalog #: APRab06838



Immunohistochemical analysis of paraffin-embedded mouse-muscle, antibody was diluted at 1:100



Immunohistochemical analysis of paraffin-embedded mouse-muscle, antibody was diluted at 1:100

Note

For research use only.