

## Summary

<b>Production Name</b>	ALX3 Rabbit Polyclonal Antibody
<b>Description</b>	Rabbit Polyclonal Antibody
<b>Host</b>	Rabbit
<b>Application</b>	WB,IHC-P,IF-P,IF-F,ICC/IF,ELISA
<b>Reactivity</b>	Human,Mouse,Rat

## Performance

<b>Conjugation</b>	Unconjugated
<b>Modification</b>	Unmodified
<b>Isotype</b>	IgG
<b>Clonality</b>	Polyclonal
<b>Form</b>	Liquid
<b>Storage</b>	Store at 4°C short term. Aliquot and store at -20°C long term. Avoid freeze/thaw cycles.
<b>Buffer</b>	Liquid in PBS containing 50% glycerol, 0.5% BSA and 0.02% New type preservative N.
<b>Purification</b>	Affinity purification

## Immunogen

<b>Gene Name</b>	ALX3
<b>Alternative Names</b>	ALX3; Homeobox protein aristaless-like 3; Proline-rich transcription factor ALX3
<b>Gene ID</b>	257.0
<b>SwissProt ID</b>	O95076.The antiserum was produced against synthesized peptide derived from human ALX3. AA range:171-220

## Application

<b>Dilution Ratio</b>	WB 1:500-1:2000, IHC-P 1:100-1:300, IF-P/IF-F/ICC/IF 1:200-1:1000, ELISA 1:20000.Not yet tested in other applications.
<b>Molecular Weight</b>	36kDa

**Product Name: ALX3 Rabbit Polyclonal Antibody**  
**Catalog #: APRab06816**

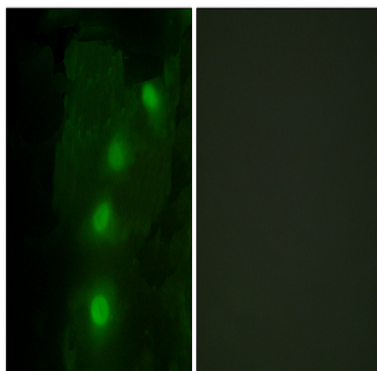


## Background

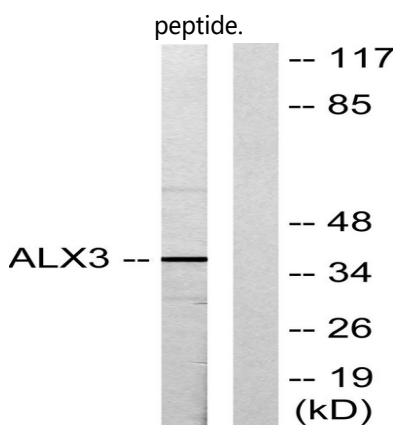
This gene encodes a nuclear protein with a homeobox DNA-binding domain that functions as a transcriptional regulator involved in cell-type differentiation and development. Preferential methylation of this gene's promoter is associated with advanced-stage neuroblastoma tumors. [provided by RefSeq, Jul 2008],function:Transcriptional regulator with a possible role in patterning of mesoderm during development.,similarity:Belongs to the paired homeobox family.,similarity:Contains 1 homeobox DNA-binding domain.,

## Research Area

## Image Data

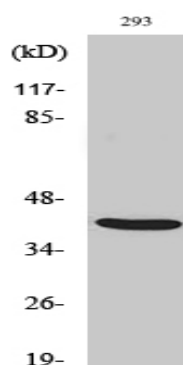


Immunofluorescence analysis of HeLa cells, using ALX3 Antibody. The picture on the right is blocked with the synthesized



Western blot analysis of lysates from 293 cells, using ALX3 Antibody. The lane on the right is blocked with the synthesized peptide.

**Product Name: ALX3 Rabbit Polyclonal Antibody**  
**Catalog #: APRab06816**



Western Blot analysis of various cells using ALX3 Polyclonal Antibody cells nucleus extracted by Minute TM Cytoplasmic and Nuclear Fractionation kit (SC-003, Invent biotech, MN, USA) .

### **Note**

For research use only.