

Product Name: ALS2CR7 Rabbit Polyclonal Antibody
Catalog #: APRab06814



Summary

Production Name	ALS2CR7 Rabbit Polyclonal Antibody
Description	Rabbit Polyclonal Antibody
Host	Rabbit
Application	WB,IHC-P,IF-P,IF-F,ICC/IF,ELISA
Reactivity	Human,Mouse

Performance

Conjugation	Unconjugated
Modification	Unmodified
Isotype	IgG
Clonality	Polyclonal
Form	Liquid
Storage	Store at 4°C short term. Aliquot and store at -20°C long term. Avoid freeze/thaw cycles.
Buffer	Liquid in PBS containing 50% glycerol, 0.5% BSA and 0.02% New type preservative N.
Purification	Affinity purification

Immunogen

Gene Name	CDK15 CDK15; ALS2CR7; PFTK2; Cyclin-dependent kinase 15; Amyotrophic lateral sclerosis 2
Alternative Names	chromosomal region candidate gene 7 protein; Cell division protein kinase 15; Serine/threonine-protein kinase ALS2CR7; Serine/threonine-protein kinase PFTAIR
Gene ID	65061.0
SwissProt ID	Q96Q40. The antiserum was produced against synthesized peptide derived from human AL2S7. AA range:261-310

Application

Dilution Ratio	WB 1:500-1:2000, IHC-P 1:100-1:300, IF-P/IF-F/ICC/IF 1:200-1:1000, ELISA 1:10000. Not yet tested in other applications.
Molecular Weight	46kDa

Product Name: ALS2CR7 Rabbit Polyclonal Antibody
Catalog #: APRab06814

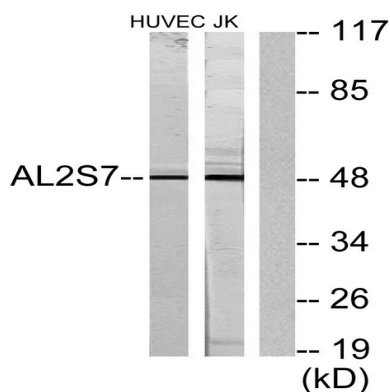


Background

CDK15 (Cyclin-Dependent Kinase 15) is a Protein Coding gene. Diseases associated with CDK15 include amyotrophic lateral sclerosis 2, juvenile. GO annotations related to this gene include transferase activity, transferring phosphorus-containing groups and protein tyrosine kinase activity. An important paralog of this gene is CDK14. protein amino acid phosphorylation, phosphorus metabolic process, phosphate metabolic process, phosphorylation,

Research Area

Image Data



Western blot analysis of lysates from Jurkat and HUVEC cells, using AL2S7 Antibody. The lane on the right is blocked with the synthesized peptide.

Note

For research use only.