

Product Name: ALS2CR13 Rabbit Polyclonal Antibody
Catalog #: APRab06812



Summary

Production Name	ALS2CR13 Rabbit Polyclonal Antibody
Description	Rabbit Polyclonal Antibody
Host	Rabbit
Application	WB,ELISA
Reactivity	Human,Mouse

Performance

Conjugation	Unconjugated
Modification	Unmodified
Isotype	IgG
Clonality	Polyclonal
Form	Liquid
Storage	Store at 4°C short term. Aliquot and store at -20°C long term. Avoid freeze/thaw cycles.
Buffer	Liquid in PBS containing 50% glycerol, 0.5% BSA and 0.02% New type preservative N.
Purification	Affinity purification

Immunogen

Gene Name	FAM117B
Alternative Names	FAM117B; ALS2CR13; Protein FAM117B; Amyotrophic lateral sclerosis 2 chromosomal region candidate gene 13 protein
Gene ID	150864.0
SwissProt ID	Q6P1L5.The antiserum was produced against synthesized peptide derived from human ALS2CR13. AA range:411-460

Application

Dilution Ratio	WB 1:500-1:2000, ELISA 1:5000.Not yet tested in other applications.
Molecular Weight	60kDa

Product Name: ALS2CR13 Rabbit Polyclonal Antibody
Catalog #: AP Rab06812

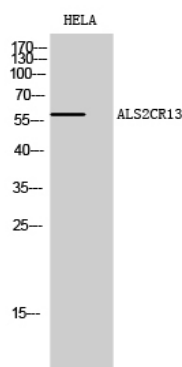


Background

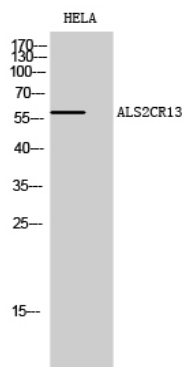
miscellaneous:ALS2CR13 is mapped in the genomic region covering the complete candidate region for Amyotrophic lateral sclerosis 2 (ALS2).,sequence caution:Contaminating sequence. Sequence of unknown origin in the N-terminal part.,miscellaneous:ALS2CR13 is mapped in the genomic region covering the complete candidate region for Amyotrophic lateral sclerosis 2 (ALS2).,sequence caution:Contaminating sequence. Sequence of unknown origin in the N-terminal part.,

Research Area

Image Data



Western Blot analysis of HELA cells using ALS2CR13 Polyclonal Antibody diluted at 1 : 500



Western Blot analysis of HELA cells using ALS2CR13 Polyclonal Antibody diluted at 1 : 500

Note

For research use only.