

**Product Name: AKAP 95 Rabbit Polyclonal Antibody**  
**Catalog #: APRab06727**



## Summary

<b>Production Name</b>	AKAP 95 Rabbit Polyclonal Antibody
<b>Description</b>	Rabbit Polyclonal Antibody
<b>Host</b>	Rabbit
<b>Application</b>	WB,IHC-P,IF-P,IF-F,ICC/IF,ELISA
<b>Reactivity</b>	Human,Mouse,Rat

## Performance

<b>Conjugation</b>	Unconjugated
<b>Modification</b>	Unmodified
<b>Isotype</b>	IgG
<b>Clonality</b>	Polyclonal
<b>Form</b>	Liquid
<b>Storage</b>	Store at 4°C short term. Aliquot and store at -20°C long term. Avoid freeze/thaw cycles.
<b>Buffer</b>	Liquid in PBS containing 50% glycerol, 0.5% BSA and 0.02% New type preservative N.
<b>Purification</b>	Affinity purification

## Immunogen

<b>Gene Name</b>	AKAP8
<b>Alternative Names</b>	AKAP8; AKAP95; A-kinase anchor protein 8; AKAP-8; A-kinase anchor protein 95 kDa; AKAP 95
<b>Gene ID</b>	10270.0
<b>SwissProt ID</b>	O43823.The antiserum was produced against synthesized peptide derived from human AKAP8. AA range:331-380

## Application

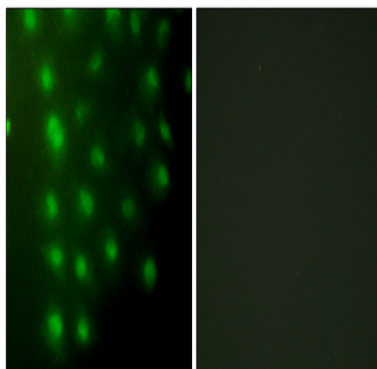
<b>Dilution Ratio</b>	WB 1:500-1:2000, IHC-P 1:100-1:300, IF-P/IF-F/ICC/IF 1:200-1:1000, ELISA 1:20000.Not yet tested in other applications.
<b>Molecular Weight</b>	76kDa

## Background

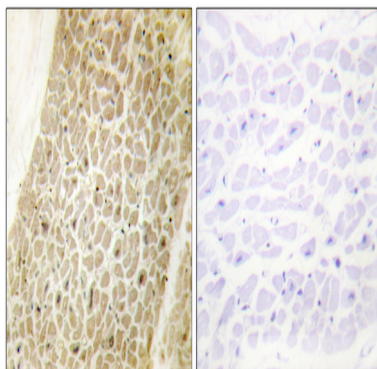
This gene encodes a member of the A-kinase anchor protein family. A-kinase anchor proteins are scaffold proteins that contain a binding domain for the RI/RII subunit of protein kinase A (PKA) and recruit PKA and other signaling molecules to specific subcellular locations. This gene encodes a nuclear A-kinase anchor protein that binds to the RII alpha subunit of PKA and may play a role in chromosome condensation during mitosis by targeting PKA and the condensin complex to chromatin. A pseudogene of this gene is located on the short arm of chromosome 9. [provided by RefSeq, May 2011],function:Anchoring protein that mediates the subcellular compartmentation of cAMP-dependent protein kinase (PKA type II),similarity:Belongs to the AKAP95 family.,subcellular location:Associated with the nuclear matrix. Redistributed and detached from condensed chromatin during mitosis.,subunit:Binds to dimeric RII-alpha regulatory subunit of PKA during mitosis.,tissue specificity:Highly expressed in heart, liver, skeletal muscle, kidney and pancreas.,

## Research Area

## Image Data



Immunofluorescence analysis of HUVEC cells, using AKAP8 Antibody. The picture on the right is blocked with the synthesized peptide.

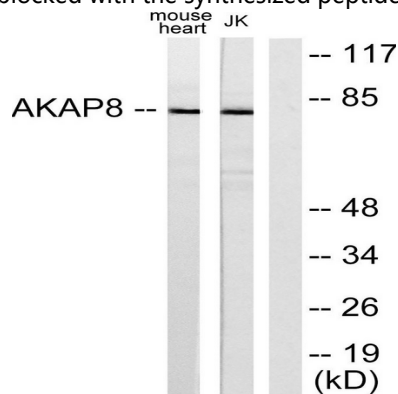


Immunohistochemistry analysis of paraffin-embedded human heart tissue, using AKAP8 Antibody. The picture on the right is

**Product Name: AKAP 95 Rabbit Polyclonal Antibody**  
**Catalog #: APRab06727**

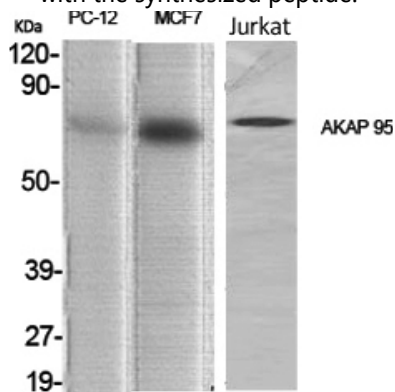


blocked with the synthesized peptide.

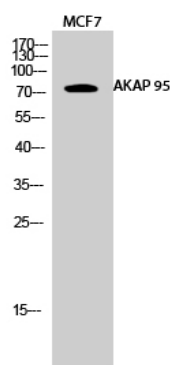


Western blot analysis of lysates from mouse heart and Jurkat cells, using AKAP8 Antibody. The lane on the right is blocked

with the synthesized peptide.



Western Blot analysis of various cells using AKAP 95 Polyclonal Antibody diluted at 1: 1000 cells nucleus extracted by Minute TM Cytoplasmic and Nuclear Fractionation kit (SC-003, Inventbiotech, MN, USA) .



Western Blot analysis of MCF7 cells using AKAP 95 Polyclonal Antibody diluted at 1: 1000 cells nucleus extracted by Minute TM Cytoplasmic and Nuclear Fractionation kit (SC-003, Inventbiotech, MN, USA) .

## Note

For research use only.