

Product Name: AHA-1 Rabbit Polyclonal Antibody
Catalog #: APRab06691



Summary

Production Name	AHA-1 Rabbit Polyclonal Antibody
Description	Rabbit Polyclonal Antibody
Host	Rabbit
Application	WB,IHC-P,IF-P,IF-F,ICC/IF,ELISA
Reactivity	Human,Rat,Mouse

Performance

Conjugation	Unconjugated
Modification	Unmodified
Isotype	IgG
Clonality	Polyclonal
Form	Liquid
Storage	Store at 4°C short term. Aliquot and store at -20°C long term. Avoid freeze/thaw cycles.
Buffer	Liquid in PBS containing 50% glycerol, 0.5% BSA and 0.02% New type preservative N.
Purification	Affinity purification

Immunogen

Gene Name	AHSA1
Alternative Names	AHSA1; C14orf3; HSPC322; Activator of 90 kDa heat shock protein ATPase homolog 1; AHA1; p38
Gene ID	10598.0
SwissProt ID	O95433.The antiserum was produced against synthesized peptide derived from human AHSA1. AA range:161-210

Application

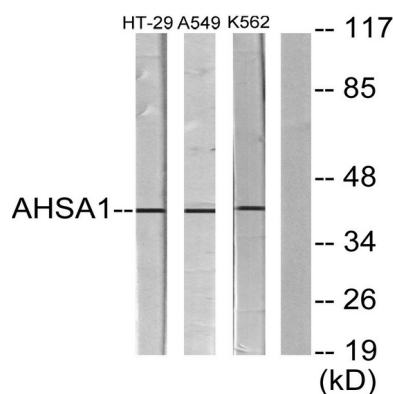
Dilution Ratio	WB 1:500-1:2000, IHC-P 1:100-1:300, ELISA 1:5000-20000, IF-P/IF-F/ICC/IF 1:50-200
Molecular Weight	38kDa

Background

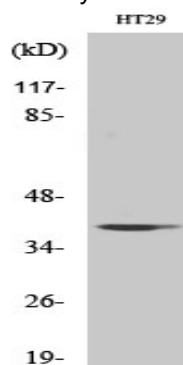
function:Chaperone that stimulates HSP90 ATPase activity (By similarity). May affect a step in the endoplasmic reticulum to Golgi trafficking.,induction:By heat shock and treatment with the HSP90 inhibitor 17-demethoxygeldanamycin (17AAG).,similarity:Belongs to the AHA1 family.,subcellular location:May transiently interact with the endoplasmic reticulum.,subunit:Interacts with HSPCA/HSP90 and with the cytoplasmic tail of the vesicular stomatitis virus glycoprotein (VSV G). Interacts with GCH1.,tissue specificity:Expressed in numerous tissues, including brain, heart, skeletal muscle and kidney and, at lower levels, liver and placenta.,function:Chaperone that stimulates HSP90 ATPase activity (By similarity). May affect a step in the endoplasmic reticulum to Golgi trafficking.,induction:By heat shock and treatment with the HSP90 inhibitor 17-demethoxygeldanamycin (17AAG).,similarity:Belongs to the AHA1 family.,subcellular location:May transiently interact with the endoplasmic reticulum.,subunit:Interacts with HSPCA/HSP90 and with the cytoplasmic tail of the vesicular stomatitis virus glycoprotein (VSV G). Interacts with GCH1.,tissue specificity:Expressed in numerous tissues, including brain, heart, skeletal muscle and kidney and, at lower levels, liver and placenta.,

Research Area

Image Data



Western blot analysis of lysates from HT-29, A549, and K562 cells, using AHA1 Antibody. The lane on the right is blocked with the synthesized peptide.



Product Name: AHA-1 Rabbit Polyclonal Antibody
Catalog #: APRab06691



Western Blot analysis of various cells using AHA-1 Polyclonal Antibody diluted at 1 : 1000

Note

For research use only.