

Product Name: AGXT2L2 Rabbit Polyclonal Antibody
Catalog #: APRab06688



Summary

Production Name	AGXT2L2 Rabbit Polyclonal Antibody
Description	Rabbit Polyclonal Antibody
Host	Rabbit
Application	WB,IHC-P,IF-P,IF-F,ICC/IF,ELISA
Reactivity	Human,Mouse,Rat

Performance

Conjugation	Unconjugated
Modification	Unmodified
Isotype	IgG
Clonality	Polyclonal
Form	Liquid
Storage	Store at 4°C short term. Aliquot and store at -20°C long term. Avoid freeze/thaw cycles.
Buffer	Liquid in PBS containing 50% glycerol, 0.5% BSA and 0.02% New type preservative N.
Purification	Affinity purification

Immunogen

Gene Name	AGXT2L2
Alternative Names	AGXT2L2; PP9286; 5-phosphohydroxy-L-lysine phospho-lyase; Alanine--glyoxylate aminotransferase 2-like 2
Gene ID	85007.0
SwissProt ID	Q8IUZ5.The antiserum was produced against synthesized peptide derived from human AGXT2L2. AA range:341-390

Application

Dilution Ratio	WB 1:500-1:2000, IHC-P 1:100-1:300, ELISA 1:10000, IF-P/IF-F/ICC/IF 1:50-200
Molecular Weight	50kDa

Product Name: AGXT2L2 Rabbit Polyclonal Antibody
Catalog #: AP Rab06688

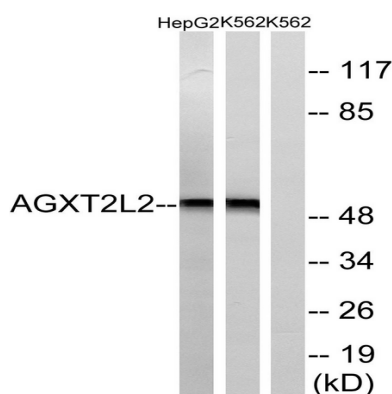


Background

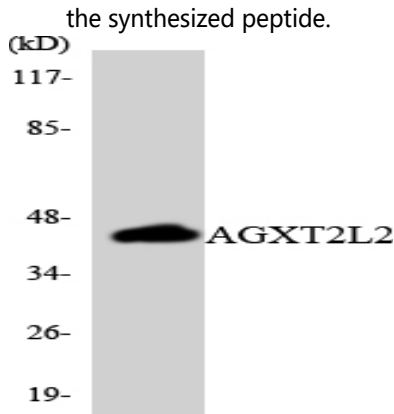
5-phosphohydroxy-L-lysine phospho-lyase(PHYKPL) Homo sapiens This is a nuclear gene encoding a mitochondrial enzyme that catalyzes the conversion of 5-phosphonooxy-L-lysine to ammonia, inorganic phosphate, and 2-aminoadipate semialdehyde. Mutations in this gene may cause phosphohydroxylysineuria. Alternative splicing results in multiple transcript variants. [provided by RefSeq, May 2013], cofactor:Pyridoxal phosphate „similarity:Belongs to the class-III pyridoxal-phosphate-dependent aminotransferase family„subunit:Homotetramer.,

Research Area

Image Data



Western blot analysis of lysates from K562 and HepG2 cells, using AGXT2L2 Antibody. The lane on the right is blocked with the synthesized peptide.



Western blot analysis of the lysates from HUVEC cells using AGXT2L2 antibody.

Note

For research use only.