

Summary

Production Name	AF-10 Rabbit Polyclonal Antibody
Description	Rabbit Polyclonal Antibody
Host	Rabbit
Application	WB,IHC-P,IF-P,IF-F,ICC/IF,ELISA
Reactivity	Human,Mouse

Performance

Conjugation	Unconjugated
Modification	Unmodified
Isotype	IgG
Clonality	Polyclonal
Form	Liquid
Storage	Store at 4°C short term. Aliquot and store at -20°C long term. Avoid freeze/thaw cycles.
Buffer	Liquid in PBS containing 50% glycerol, 0.5% BSA and 0.02% New type preservative N.
Purification	Affinity purification

Immunogen

Gene Name	MLLT10
Alternative Names	MLLT10; AF10; Protein AF-10; ALL1-fused gene from chromosome 10 protein
Gene ID	8028.0
SwissProt ID	P55197.The antiserum was produced against synthesized peptide derived from human AF10. AA range:211-260

Application

Dilution Ratio	WB 1:500-1:2000, IHC-P 1:100-1:300, IF-P/IF-F/ICC/IF 1:200-1:1000, ELISA 1:10000.Not yet tested in other applications.
Molecular Weight	109kDa

Product Name: AF-10 Rabbit Polyclonal Antibody
Catalog #: AP Rab06656

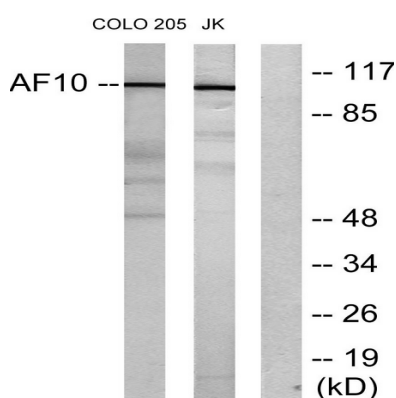


Background

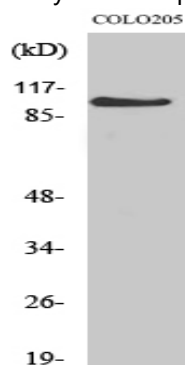
myeloid/lymphoid or mixed-lineage leukemia; translocated to, 10(MLLT10) Homo sapiens This gene encodes a transcription factor and has been identified as a partner gene involved in several chromosomal rearrangements resulting in various leukemias. Multiple transcript variants encoding different isoforms have been found for this gene. [provided by RefSeq, Sep 2010],disease:A chromosomal aberration involving MLLT10 is associated with acute leukemias. Translocation t(10;11)(p12;q23) with MLL/HRX. The result is a rogue activator protein.,disease:A chromosomal aberration involving MLLT10 is associated with diffuse histiocytic lymphomas. Translocation t(10;11)(p13;q14) with PICALM.,PTM:Phosphorylated upon DNA damage, probably by ATM or ATR.,similarity:Contains 2 PHD-type zinc fingers.,tissue specificity:Expressed abundantly in testis.,

Research Area

Image Data

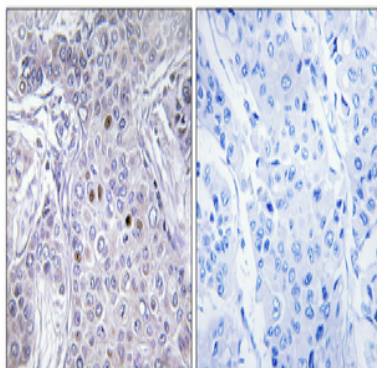


Western blot analysis of lysates from COLO205 and Jurkat cells, using AF10 Antibody. The lane on the right is blocked with the synthesized peptide.



Western Blot analysis of various cells using AF-10 Polyclonal Antibody diluted at 1: 1000

Product Name: AF-10 Rabbit Polyclonal Antibody
Catalog #: APRab06656



Immunohistochemical analysis of paraffin-embedded Human breast cancer. Antibody was diluted at 1:100 (4°,overnight) . High-pressure and temperature Tris-EDTA,pH8.0 was used for antigen retrieval. Negative contrl (right) obtaned from antibody was pre-absorbed by immunogen peptide.

Note

For research use only.