

## Summary

<b>Production Name</b>	ADD1 Rabbit Polyclonal Antibody
<b>Description</b>	Rabbit Polyclonal Antibody
<b>Host</b>	Rabbit
<b>Application</b>	IHC-P,IF-P,IF-F,ICC/IF,ELISA
<b>Reactivity</b>	Human,Mouse,Rat

## Performance

<b>Conjugation</b>	Unconjugated
<b>Modification</b>	Unmodified
<b>Isotype</b>	IgG
<b>Clonality</b>	Polyclonal
<b>Form</b>	Liquid
<b>Storage</b>	Store at 4°C short term. Aliquot and store at -20°C long term. Avoid freeze/thaw cycles.
<b>Buffer</b>	Liquid in PBS containing 50% glycerol, 0.5% BSA and 0.02% New type preservative N.
<b>Purification</b>	Affinity purification

## Immunogen

<b>Gene Name</b>	ADD1
<b>Alternative Names</b>	ADD1; ADDA; Alpha-adducin; Erythrocyte adducin subunit alpha
<b>Gene ID</b>	118.0
<b>SwissProt ID</b>	P35611.The antiserum was produced against synthesized peptide derived from human ADD1. AA range:411-460

## Application

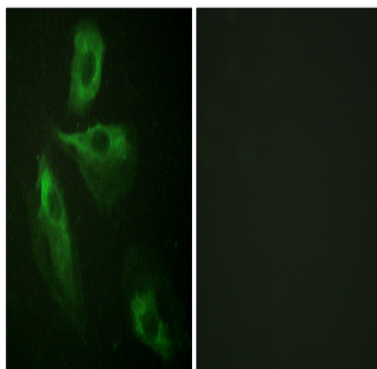
<b>Dilution Ratio</b>	IHC-P 1:100-1:300, IF-P/IF-F/ICC/IF 1:200-1:1000, ELISA 1:10000.Not yet tested in other applications.
<b>Molecular Weight</b>	

## Background

adducin 1(ADD1) Homo sapiens Adducins are a family of cytoskeleton proteins encoded by three genes (alpha, beta, gamma). Adducin is a heterodimeric protein that consists of related subunits, which are produced from distinct genes but share a similar structure. Alpha- and beta-adducin include a protease-resistant N-terminal region and a protease-sensitive, hydrophilic C-terminal region. Alpha- and gamma-adducins are ubiquitously expressed. In contrast, beta-adducin is expressed at high levels in brain and hematopoietic tissues. Adducin binds with high affinity to Ca(2+)/calmodulin and is a substrate for protein kinases A and C. Alternative splicing results in multiple variants encoding distinct isoforms; however, not all variants have been fully described. [provided by RefSeq, Jul 2008], alternative products: Additional isoforms seem to exist, domain: Each subunit is comprised of three regions: a NH2-terminal protease-resistant globular head region, a short connecting subdomain, and a protease-sensitive tail region., function: Membrane-cytoskeleton-associated protein that promotes the assembly of the spectrin-actin network. Binds to calmodulin., PTM: The N-terminus is blocked., similarity: Belongs to the aldolase class II family. Adducin subfamily., subunit: Heterodimer of an alpha and a beta subunit or an alpha and a gamma subunit. Binds ROCK1., tissue specificity: Expressed in all tissues. Found in much higher levels in reticulocytes than the beta subunit.,

## Research Area

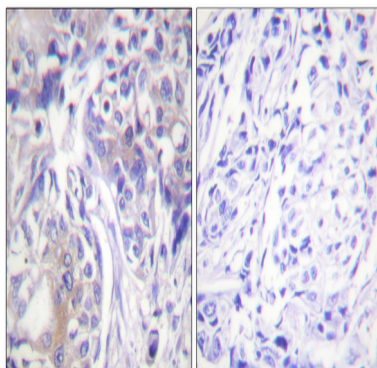
## Image Data



Immunofluorescence analysis of HeLa cells, using ADD1 Antibody. The picture on the right is blocked with the synthesized peptide.

**Product Name: ADD1 Rabbit Polyclonal Antibody**  
**Catalog #: APRab06617**

---



Immunohistochemistry analysis of paraffin-embedded human breast carcinoma tissue, using ADD1 Antibody. The picture on the right is blocked with the synthesized peptide.

**Note**

For research use only.