

Summary

Production Name	ABHD2 Rabbit Polyclonal Antibody
Description	Rabbit Polyclonal Antibody
Host	Rabbit
Application	WB,IF-P,IF-F,ICC/IF,ELISA
Reactivity	Human,Mouse

Performance

Conjugation	Unconjugated
Modification	Unmodified
Isotype	IgG
Clonality	Polyclonal
Form	Liquid
Storage	Store at 4°C short term. Aliquot and store at -20°C long term. Avoid freeze/thaw cycles.
Buffer	Liquid in PBS containing 50% glycerol, 0.5% BSA and 0.02% New type preservative N.
Purification	Affinity purification

Immunogen

Gene Name	ABHD2
Alternative Names	ABHD2; LABH2; Abhydrolase domain-containing protein 2; Lung alpha/beta hydrolase 2; Protein PHPS1-2
Gene ID	11057.0
SwissProt ID	P08910.The antiserum was produced against synthesized peptide derived from human ABHD2. AA range:251-300

Application

Dilution Ratio	WB 1:500-1:2000, IF-P/IF-F/ICC/IF 1:200-1:1000, ELISA 1:40000.Not yet tested in other applications.
Molecular Weight	48kDa

Product Name: ABHD2 Rabbit Polyclonal Antibody
Catalog #: AP Rab06437

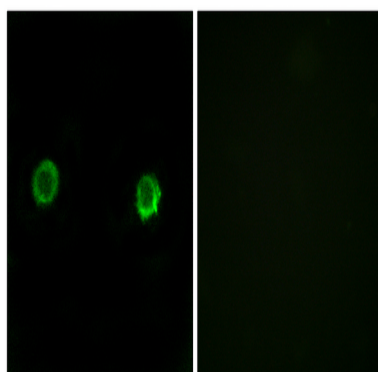


Background

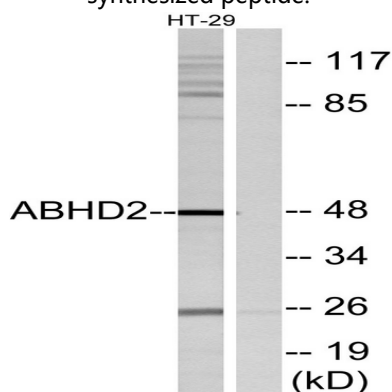
This gene encodes a protein containing an alpha/beta hydrolase fold, which is a catalytic domain found in a very wide range of enzymes. The function of this protein has not been determined. Alternative splicing of this gene results in two transcript variants encoding the same protein. [provided by RefSeq, Jul 2008], caution: Was originally (PubMed:2843827) thought to be a G-coupled receptor., function: May play a role in smooth muscle cells migration., similarity: Belongs to the AB hydrolase superfamily. AB hydrolase 4 family.,

Research Area

Image Data

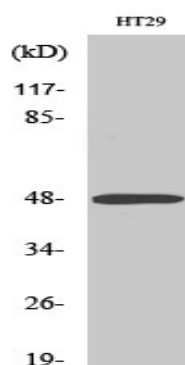


Immunofluorescence analysis of MCF-7 cells, using ABHD2 Antibody. The picture on the right is blocked with the synthesized peptide.



Western blot analysis of lysates from HT29 cells, using ABHD2 Antibody. The lane on the right is blocked with the synthesized peptide.

Product Name: ABHD2 Rabbit Polyclonal Antibody
Catalog #: APRab06437



Western Blot analysis of various cells using ABHD2 Polyclonal Antibody

Note

For research use only.