

Summary

Production Name	AAK1 Rabbit Polyclonal Antibody
Description	Rabbit Polyclonal Antibody
Host	Rabbit
Application	WB,IHC-P,IF-P,IF-F,ICC/IF,ELISA
Reactivity	Human,Mouse,Rat,Monkey

Performance

Conjugation	Unconjugated
Modification	Unmodified
Isotype	IgG
Clonality	Polyclonal
Form	Liquid
Storage	Store at 4°C short term. Aliquot and store at -20°C long term. Avoid freeze/thaw cycles.
Buffer	Liquid in PBS containing 50% glycerol, 0.5% BSA and 0.02% New type preservative N.
Purification	Affinity purification

Immunogen

Gene Name	AAK1
Alternative Names	AAK1; KIAA1048; AP2-associated protein kinase 1; Adaptor-associated kinase 1
Gene ID	22848.0
SwissProt ID	Q2M2I8.The antiserum was produced against synthesized peptide derived from human AAK1. AA range:271-320

Application

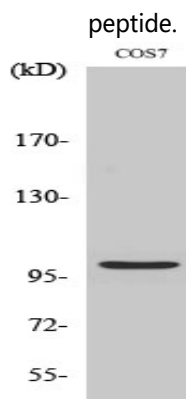
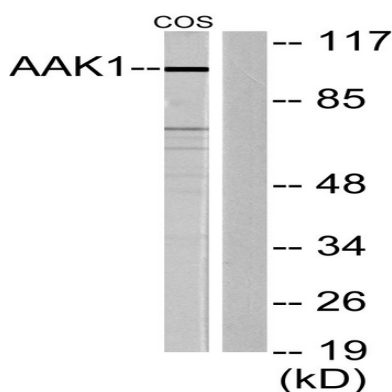
Dilution Ratio	WB 1:500-1:2000, IHC-P 1:100-1:300, IF-P/IF-F/ICC/IF 1:200-1:1000, ELISA 1:20000.Not yet tested in other applications.
Molecular Weight	94kDa

Background

Adaptor-related protein complex 2 (AP-2 complexes) functions during receptor-mediated endocytosis to trigger clathrin assembly, interact with membrane-bound receptors, and recruit endocytic accessory factors. This gene encodes a member of the SNF1 subfamily of Ser/Thr protein kinases. The protein interacts with and phosphorylates a subunit of the AP-2 complex, which promotes binding of AP-2 to sorting signals found in membrane-bound receptors and subsequent receptor endocytosis. Its kinase activity is stimulated by clathrin. Alternatively spliced transcript variants have been described, but their biological validity has not been determined. [provided by RefSeq, Jul 2008], catalytic activity: ATP + a protein = ADP + a phosphoprotein., enzyme regulation: Stimulated by clathrin., function: Phosphorylates the AP2M1/mu2 subunit of the adaptor protein complex 2 (AP-2). May play a role in regulating aspects of clathrin-mediated endocytosis., PTM: Autophosphorylated., similarity: Belongs to the protein kinase superfamily. Ser/Thr protein kinase family., similarity: Contains 1 protein kinase domain., subcellular location: Active when found in clathrin-coated pits at the plasma membrane., subunit: Interacts with alpha-adaptin and AP-2.,

Research Area

Image Data



Product Name: AAK1 Rabbit Polyclonal Antibody
Catalog #: APRab06377



Western Blot analysis of various cells using AAK1 Polyclonal Antibody

Note

For research use only.