

Product Name: AAA1 Rabbit Polyclonal Antibody
Catalog #: APRab06372



Summary

Production Name	AAA1 Rabbit Polyclonal Antibody
Description	Rabbit Polyclonal Antibody
Host	Rabbit
Application	WB,ELISA
Reactivity	Human,Mouse,Rat

Performance

Conjugation	Unconjugated
Modification	Unmodified
Isotype	IgG
Clonality	Polyclonal
Form	Liquid
Storage	Store at 4°C short term. Aliquot and store at -20°C long term. Avoid freeze/thaw cycles.
Buffer	Liquid in PBS containing 50% glycerol, and 0.02% New type preservative N.
Purification	Affinity purification

Immunogen

Gene Name	SLC7A10 ASC1
Alternative Names	
Gene ID	56301.0
SwissProt ID	Q9NS82. Synthesized peptide derived from human protein . at AA range: 200-280

Application

Dilution Ratio	WB 1:500-2000, ELISA 1:5000-20000
Molecular Weight	57kDa

Background

SLC7A10, in association with 4F2HC (SLC3A2; MIM 158070), mediates high-affinity transport of D-serine and several other neutral amino acids (Nakauchi et al., 2000 [PubMed 10863037]).[supplied by OMIM, Mar 2008],disease:Defects in SLC7A10

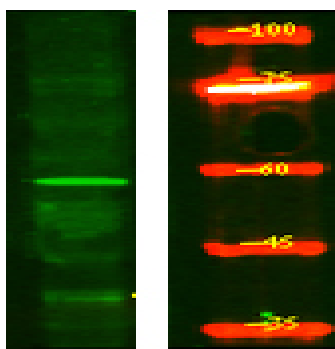
Product Name: AAA1 Rabbit Polyclonal Antibody
Catalog #: APRab06372



may be involved in cystinuria (CSNU) which arises from impaired transport of cystine and dibasic amino acids through the epithelial cells of the renal tubule and gastrointestinal tract. Three types of cystinuria have been described.,function:Sodium-independent, high affinity transport of small neutral D- and L-amino acids. May play a role in the modulation of glutamatergic transmission through mobilization of D-serine at the glutamatergic synapse.,similarity:Belongs to the amino acid-polyamine-organocation (APC) superfamily.,subunit:Disulfide-linked heterodimer with the amino acid transport protein SLC3A2/4F2hc.,tissue specificity:Expressed in brain, heart, kidney, liver, lung, pancreas, placenta, and skeletal muscle.,

Research Area

Image Data



Western Blot analysis of HEK293 lysis, using primary antibody at 1:1000 dilution. Secondary antibody was diluted at 1:10000

Note

For research use only.