

Product Name: A1Up Rabbit Polyclonal Antibody
Catalog #: APRab06363



Summary

| | |
|------------------------|---------------------------------|
| Production Name | A1Up Rabbit Polyclonal Antibody |
| Description | Rabbit Polyclonal Antibody |
| Host | Rabbit |
| Application | WB,IHC-P,IF-P,IF-F,ICC/IF,ELISA |
| Reactivity | Human,Mouse |

Performance

| | |
|---------------------|--|
| Conjugation | Unconjugated |
| Modification | Unmodified |
| Isotype | IgG |
| Clonality | Polyclonal |
| Form | Liquid |
| Storage | Store at 4°C short term. Aliquot and store at -20°C long term. Avoid freeze/thaw cycles. |
| Buffer | Liquid in PBS containing 50% glycerol, 0.5% BSA and 0.02% New type preservative N. |
| Purification | Affinity purification |

Immunogen

| | |
|--------------------------|---|
| Gene Name | UBQLN4 UBQLN4; C1orf6; CIP75; UBIN; Ubiquilin-4; Ataxin-1 interacting ubiquitin-like protein; |
| Alternative Names | A1Up; Ataxin-1 ubiquitin-like-interacting protein A1U; Connexin43-interacting protein of 75 kDa; CIP75 |
| Gene ID | 56893.0 |
| SwissProt ID | Q9NRR5.The antiserum was produced against synthesized peptide derived from human UBQLN4. AA range:201-250 |

Application

| | |
|-------------------------|--|
| Dilution Ratio | WB 1:500-1:2000, IHC-P 1:100-1:300, ELISA 1:40000, IF-P/IF-F/ICC/IF 1:50-200 |
| Molecular Weight | 54kDa |

Product Name: A1Up Rabbit Polyclonal Antibody
Catalog #: APRab06363

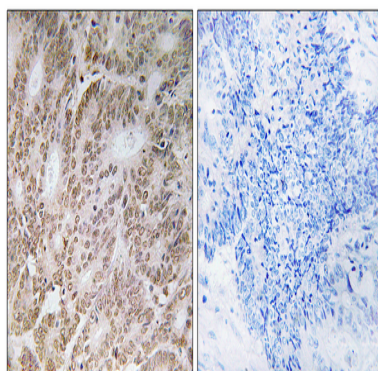


Background

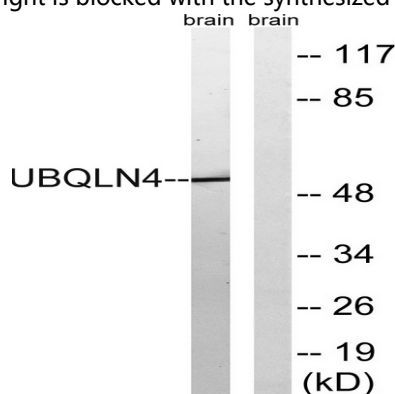
PTM:Phosphorylated upon DNA damage, probably by ATM or ATR.,similarity:Contains 1 UBA domain.,similarity:Contains 1 ubiquitin-like domain.,subcellular location:May associate with the endoplasmic reticulum.,subunit:Homodimer. Binds SCA1. Binds signal sequences of proteins that are targeted to the endoplasmic reticulum.,tissue specificity:Highly expressed in pancreas, kidney, skeletal muscle, heart and throughout the brain, and at lower levels in placenta, lung and liver.,PTM:Phosphorylated upon DNA damage, probably by ATM or ATR.,similarity:Contains 1 UBA domain.,similarity:Contains 1 ubiquitin-like domain.,subcellular location:May associate with the endoplasmic reticulum.,subunit:Homodimer. Binds SCA1. Binds signal sequences of proteins that are targeted to the endoplasmic reticulum.,tissue specificity:Highly expressed in pancreas, kidney, skeletal muscle, heart and throughout the brain, and at lower levels in placenta, lung and liver.,

Research Area

Image Data



Immunohistochemistry analysis of paraffin-embedded human colon carcinoma tissue, using UBQLN4 Antibody. The picture on the right is blocked with the synthesized peptide.



Western blot analysis of lysates from mouse brain, using UBQLN4 Antibody. The lane on the right is blocked with the

Product Name: A1Up Rabbit Polyclonal Antibody
Catalog #: APRab06363



synthesized peptide.

Note

For research use only.