

**Product Name: A Cyclase IX Rabbit Polyclonal Antibody**  
**Catalog #: APRab06354**



## Summary

<b>Production Name</b>	A Cyclase IX Rabbit Polyclonal Antibody
<b>Description</b>	Rabbit Polyclonal Antibody
<b>Host</b>	Rabbit
<b>Application</b>	WB,IHC-P,IF-P,IF-F,ICC/IF,ELISA
<b>Reactivity</b>	Human,Rat,Mouse

## Performance

<b>Conjugation</b>	Unconjugated
<b>Modification</b>	Unmodified
<b>Isotype</b>	IgG
<b>Clonality</b>	Polyclonal
<b>Form</b>	Liquid
<b>Storage</b>	Store at 4°C short term. Aliquot and store at -20°C long term. Avoid freeze/thaw cycles.
<b>Buffer</b>	Liquid in PBS containing 50% glycerol, 0.5% BSA and 0.02% New type preservative N.
<b>Purification</b>	Affinity purification

## Immunogen

<b>Gene Name</b>	ADCY9
<b>Alternative Names</b>	ADCY9; KIAA0520; Adenylate cyclase type 9; ATP pyrophosphate-lyase 9; Adenylate cyclase type IX; Adenylyl cyclase 9
<b>Gene ID</b>	115.0
<b>SwissProt ID</b>	O60503.The antiserum was produced against synthesized peptide derived from human ADCY9. AA range:137-186

## Application

<b>Dilution Ratio</b>	WB 1:500-1:2000, IHC-P 1:100-1:300, ELISA 1:10000, IF-P/IF-F/ICC/IF 1:50-200
<b>Molecular Weight</b>	150kDa

**Product Name: A Cyclase IX Rabbit Polyclonal Antibody**  
**Catalog #: APRab06354**



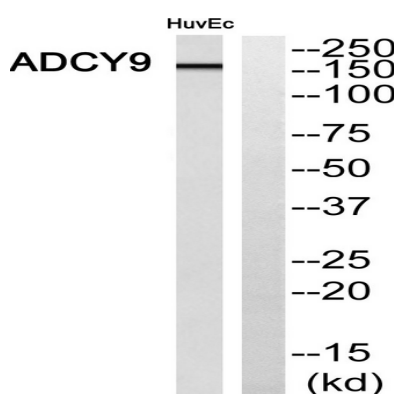
## Background

Adenylate cyclase is a membrane bound enzyme that catalyses the formation of cyclic AMP from ATP. It is regulated by a family of G protein-coupled receptors, protein kinases, and calcium. The type 9 adenylyl cyclase is a widely distributed adenylyl cyclase, and it is stimulated by beta-adrenergic receptor activation but is insensitive to forskolin, calcium, and somatostatin. [provided by RefSeq, Jul 2008],catalytic activity:ATP = 3',5'-cyclic AMP + diphosphate.,cofactor:Binds 2 magnesium ions per subunit.,enzyme regulation:Insensitive to calcium/calmodulin, forskolin and somatostatin. Stimulated by beta-adrenergic receptor activation.,function:May play a fundamental role in situations where fine interplay between intracellular calcium and cAMP determines the cellular function. May be a physiologically relevant docking site for calcineurin.,similarity:Belongs to the adenylyl cyclase class-4/guanylyl cyclase family.,similarity:Contains 2 guanylate cyclase domains.,tissue specificity:Expressed in multiple cells of the lung, with expression highest in airway smooth muscle.,

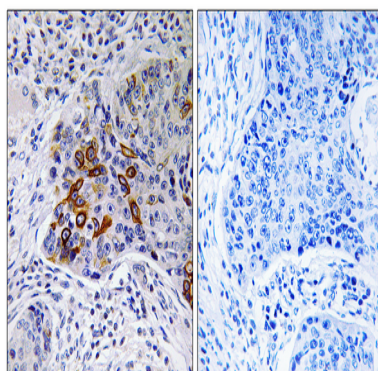
## Research Area

Purine metabolism;Calcium;Chemokine;Oocyte meiosis;Vascular smooth muscle contraction;Gap junction;GnRH;Progesterone-mediated oocyte maturation;Melanogenesis;Vibrio cholerae infection;Dilated cardiomyopathy;

## Image Data

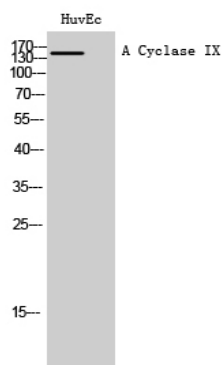


Western blot analysis of ADCY9 Antibody. The lane on the right is blocked with the ADCY9 peptide.



Immunohistochemistryt analysis of paraffin-embedded human lung carcinoma, using ADCY9 Antibody. The lane on the right is blocked with the ADCY9 peptide.

**Product Name: A Cyclase IX Rabbit Polyclonal Antibody**  
**Catalog #: APRab06354**



Western Blot analysis of HuvEc cells using A Cyclase IX Polyclonal Antibody diluted at 1: 1000

### **Note**

For research use only.