

Product Name: Ref-1 (Acetyl Lys6) Rabbit Polyclonal Antibody
Catalog #: APRab06253

Summary

Production Name	Ref-1 (Acetyl Lys6) Rabbit Polyclonal Antibody
Description	Rabbit Polyclonal Antibody
Host	Rabbit
Application	WB,IHC-P,IF-P,IF-F,ICC/IF,ELISA
Reactivity	Human,Rat,Mouse

Performance

Conjugation	Unconjugated
Modification	Acetyl Antibody
Isotype	IgG
Clonality	Polyclonal
Form	Liquid
Storage	Store at 4°C short term. Aliquot and store at -20°C long term. Avoid freeze/thaw cycles.
Buffer	Liquid in PBS containing 50% glycerol, 0.5% BSA and 0.02% New type preservative N.
Purification	Affinity purification

Immunogen

Gene Name	APEX1 APEX1; APE; APE1; APEX; APX; HAP1; REF1; DNA-(apurinic or apyrimidinic site) lyase;
Alternative Names	APEX nuclease; APEN; Apurinic-apyrimidinic endonuclease 1; AP endonuclease 1; APE-1; REF-1; Redox factor-1
Gene ID	328.0
SwissProt ID	P27695.The antiserum was produced against synthesized Acetyl-peptide derived from human APE1 around the Acetylation site of Lys6. AA range:1-50

Application

Dilution Ratio	WB 1:500-1:2000, IHC-P 1:100-300, ELISA 1:20000, IF-P/IF-F/ICC/IF 1:50-200
Molecular Weight	35kDa

Product Name: Ref-1 (Acetyl Lys6) Rabbit Polyclonal Antibody
Catalog #: APRab06253



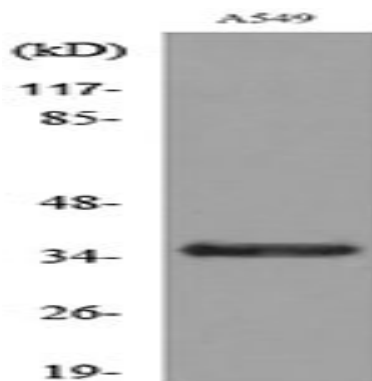
Background

Apurinic/aprimidinic (AP) sites occur frequently in DNA molecules by spontaneous hydrolysis, by DNA damaging agents or by DNA glycosylases that remove specific abnormal bases. AP sites are pre-mutagenic lesions that can prevent normal DNA replication so the cell contains systems to identify and repair such sites. Class II AP endonucleases cleave the phosphodiester backbone 5' to the AP site. This gene encodes the major AP endonuclease in human cells. Splice variants have been found for this gene; all encode the same protein. [provided by RefSeq, Jul 2008], catalytic activity: The C-O-P bond 3' to the apurinic or apyrimidinic site in DNA is broken by a beta-elimination reaction, leaving a 3'-terminal unsaturated sugar and a product with a terminal 5'-phosphate., function: Repairs oxidative DNA damages in vitro. May have a role in protection against cell lethality and suppression of mutations. Removes the blocking groups from the 3'-termini of the DNA strand breaks generated by ionizing radiations and bleomycin., similarity: Belongs to the DNA repair enzymes AP/exoA family., subunit: Monomer. Component of the SET complex, which also contains SET, ANP32A, HMGB2 and NME1.,

Research Area

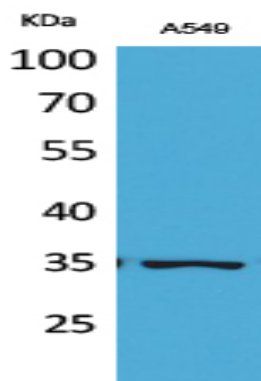
Base excision repair;

Image Data

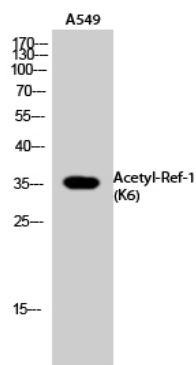


Western blot analysis of lysate from A549 cells, using APE1 (Acetyl-Lys6) Antibody.

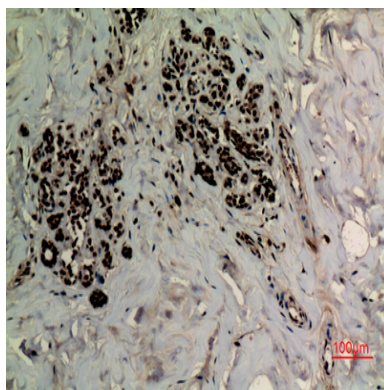
Product Name: Ref-1 (Acetyl Lys6) Rabbit Polyclonal Antibody
Catalog #: APRab06253



Western Blot analysis of A549 cells using Acetyl-Ref-1 (K6) Polyclonal Antibody.. Secondary antibody was diluted at 1:20000

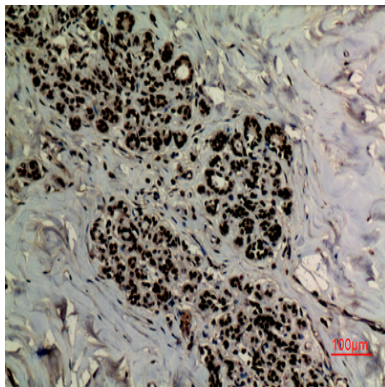


Western Blot analysis of A549 cells using Acetyl-Ref-1 (K6) Polyclonal Antibody. Secondary antibody was diluted at 1:20000



Immunohistochemical analysis of paraffin-embedded human-breast, antibody was diluted at 1:100

**Product Name: Ref-1 (Acetyl Lys6) Rabbit Polyclonal
Antibody**
Catalog #: APRab06253



Immunohistochemical analysis of paraffin-embedded human-breast, antibody was diluted at 1:100

Note

For research use only.