

Product Name: HSP70 (Acetyl Lys246) Rabbit Polyclonal Antibody
Catalog #: APRab06223

Summary

Production Name	HSP70 (Acetyl Lys246) Rabbit Polyclonal Antibody
Description	Rabbit Polyclonal Antibody
Host	Rabbit
Application	WB,ELISA
Reactivity	Human,Rat,Mouse

Performance

Conjugation	Unconjugated
Modification	Acetyl Antibody
Isotype	IgG
Clonality	Polyclonal
Form	Liquid
Storage	Store at 4°C short term. Aliquot and store at -20°C long term. Avoid freeze/thaw cycles.
Buffer	Liquid in PBS containing 50% glycerol, 0.5% BSA and 0.02% New type preservative N.
Purification	Affinity purification

Immunogen

Gene Name	HSPA1A
Alternative Names	HSPA1A; HSPA1; HSPA1B; Heat shock 70 kDa protein 1A/1B; Heat shock 70 kDa protein 1/2; HSP70-1/HSP70-2; HSP70.1/HSP70.2
Gene ID	3303/3304
SwissProt ID	P0DMV8/P0DMV9.Synthesized acetyl-peptide derived from the Internal region of human HSP70 around the acetylation site of K246.

Application

Dilution Ratio	WB 1:500-1:2000, ELISA 1:10000.Not yet tested in other applications.
Molecular Weight	70kDa

Product Name: HSP70 (Acetyl Lys246) Rabbit Polyclonal Antibody
Catalog #: AP Rab06223

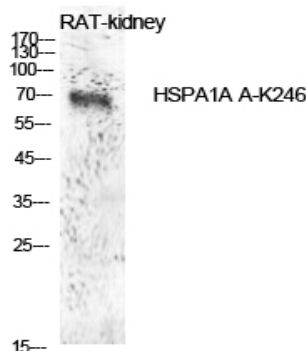
Background

This intronless gene encodes a 70kDa heat shock protein which is a member of the heat shock protein 70 family. In conjunction with other heat shock proteins, this protein stabilizes existing proteins against aggregation and mediates the folding of newly translated proteins in the cytosol and in organelles. It is also involved in the ubiquitin-proteasome pathway through interaction with the AU-rich element RNA-binding protein 1. The gene is located in the major histocompatibility complex class III region, in a cluster with two closely related genes which encode similar proteins. [provided by RefSeq, Jul 2008],function:In cooperation with other chaperones, Hsp70s stabilize preexistent proteins against aggregation and mediate the folding of newly translated polypeptides in the cytosol as well as within organelles. These chaperones participate in all these processes through their ability to recognize nonnative conformations of other proteins. They bind extended peptide segments with a net hydrophobic character exposed by polypeptides during translation and membrane translocation, or following stress-induced damage. In case of rotavirus A infection, serves as a post-attachment receptor for the virus to facilitate entry into the cell.,induction:By heat shock.,similarity:Belongs to the heat shock protein 70 family.,subunit:HSPA1B is found in a sperm-specific complex with CATSPER1 and CATSPERB (By similarity). Interacts with TSC2. Interacts with IRAK1BP1.,tissue specificity:HSPA1B is testis-specific.,

Research Area

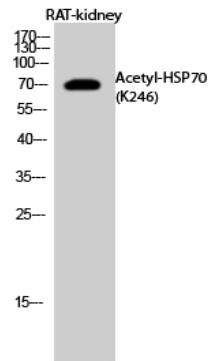
Spliceosome;MAPK_ERK_Growth;MAPK_G_Protein;Endocytosis;Antigen processing and presentation;Prion diseases;

Image Data



Western Blot analysis of rat kidney cells using Acetyl-HSP70 (K246) Polyclonal Antibody. Antibody was diluted at 1:1000.
Secondary antibody was diluted at 1:20000

Product Name: HSP70 (Acetyl Lys246) Rabbit Polyclonal Antibody
Catalog #: APRab06223



Western Blot analysis of RAT-kidney cells using Acetyl-HSP70 (K246) Polyclonal Antibody diluted at 1: 1000. Secondary antibody was diluted at 1:20000

Note

For research use only.