

Product Name: Histone H2B (Acetyl Lys15) Rabbit Polyclonal Antibody
Catalog #: APRab06196

Summary

Production Name	Histone H2B (Acetyl Lys15) Rabbit Polyclonal Antibody
Description	Rabbit Polyclonal Antibody
Host	Rabbit
Application	WB,IHC-P,IF-P,IF-F,ICC/IF,ELISA
Reactivity	Human,Mouse

Performance

Conjugation	Unconjugated
Modification	Acetyl Antibody
Isotype	IgG
Clonality	Polyclonal
Form	Liquid
Storage	Store at 4°C short term. Aliquot and store at -20°C long term. Avoid freeze/thaw cycles.
Buffer	Liquid in PBS containing 50% glycerol, 0.5% BSA and 0.02% New type preservative N.
Purification	Affinity purification

Immunogen

Gene Name	H2BFS
Alternative Names	H2BFS; Histone H2B type F-S; Histone H2B.s; H2B/s;H2BK15AC
Gene ID	54145.0
SwissProt ID	P57053.The antiserum was produced against synthesized peptide derived from human Histone H2B around the acetylated site of Lys15. AA range:1-50

Application

Dilution Ratio	WB 1:500-1:2000, IHC-P 1:100-1:300, IF-P/IF-F/ICC/IF 1:200-1:1000, ELISA 1:5000.Not yet tested in other applications.
Molecular Weight	20kDa

Product Name: Histone H2B (Acetyl Lys15) Rabbit Polyclonal Antibody
Catalog #: APRab06196



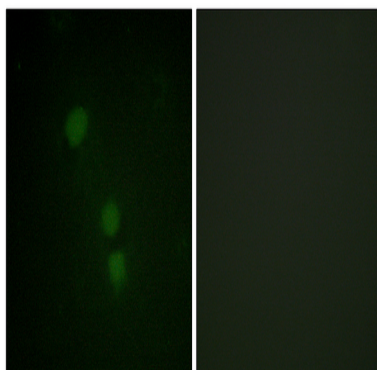
Background

H2BFS (H2B Histone Family Member S (Pseudogene)) is a Pseudogene. Diseases associated with H2BFS include endometrial stromal sarcoma. Among its related pathways are Packaging Of Telomere Ends. GO annotations related to this gene include sequence-specific DNA binding and protein heterodimerization activity. An important paralog of this gene is HIST1H2BH. DNA packaging, chromatin organization, chromatin assembly or disassembly, nucleosome assembly, defense response, response to bacterium, chromatin assembly, cellular macromolecular complex subunit organization, cellular macromolecular complex assembly, nucleosome organization, defense response to bacterium, macromolecular complex subunit organization, chromosome organization, macromolecular complex assembly, protein-DNA complex assembly,

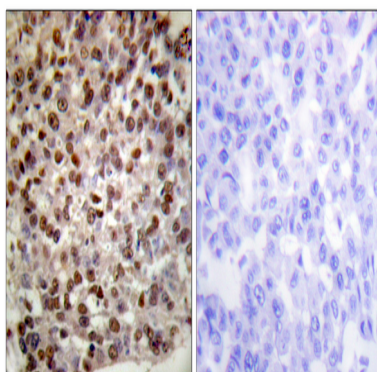
Research Area

Protein_Acetylation

Image Data



Immunofluorescence analysis of HeLa cells, using Histone H2B (Acetyl-Lys15) Antibody. The picture on the right is blocked with the synthesized peptide.

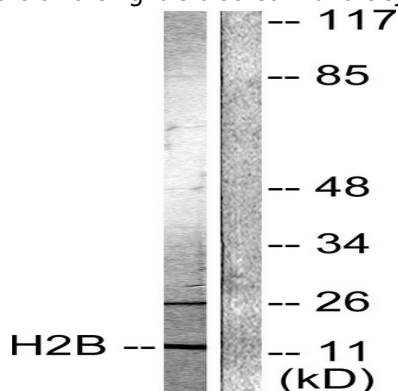


Immunohistochemistry analysis of paraffin-embedded human breast carcinoma tissue, using Histone H2B (Acetyl-Lys15)

Product Name: Histone H2B (Acetyl Lys15) Rabbit Polyclonal Antibody
Catalog #: APRab06196

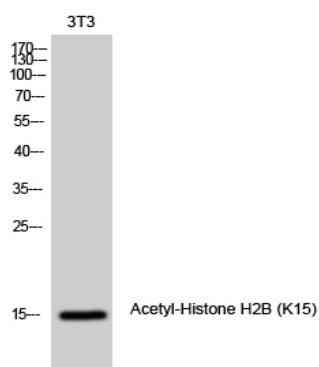


Antibody. The picture on the right is blocked with the synthesized peptide.



Western blot analysis of lysates from Raw264.7 cells, treated with TSA 400nM 24h, using Histone H2B (Acetyl-Lys15)

Antibody. The lane on the right is blocked with the synthesized peptide.



Western Blot analysis of 3T3 cells using Acetyl-Histone H2B (K15) Polyclonal Antibody diluted at 1: 1000. Secondary antibody was diluted at 1:20000

Note

For research use only.