

**Product Name: Cytokeratin 8 (Acetyl Lys483) Rabbit Polyclonal Antibody**  
**Catalog #: APRab06180**

---



## Summary

<b>Production Name</b>	Cytokeratin 8 (Acetyl Lys483) Rabbit Polyclonal Antibody
<b>Description</b>	Rabbit Polyclonal Antibody
<b>Host</b>	Rabbit
<b>Application</b>	WB,IHC-P,IF-P,IF-F,ICC/IF,ELISA
<b>Reactivity</b>	Human,Rat,Mouse

## Performance

<b>Conjugation</b>	Unconjugated
<b>Modification</b>	Acetyl Antibody
<b>Isotype</b>	IgG
<b>Clonality</b>	Polyclonal
<b>Form</b>	Liquid
<b>Storage</b>	Store at 4°C short term. Aliquot and store at -20°C long term. Avoid freeze/thaw cycles.
<b>Buffer</b>	Liquid in PBS containing 50% glycerol, 0.5% BSA and 0.02% New type preservative N.
<b>Purification</b>	Affinity purification

## Immunogen

<b>Gene Name</b>	KRT8
<b>Alternative Names</b>	KRT8; CYK8; Keratin, type II cytoskeletal 8; Cytokeratin-8; CK-8; Keratin-8; K8; Type-II keratin Kb8
<b>Gene ID</b>	3856.0
<b>SwissProt ID</b>	P05787.The antiserum was produced against synthesized Acetyl-peptide derived from human K8 around the Acetylation site of Lys483. AA range:434-483

## Application

<b>Dilution Ratio</b>	WB 1:500-1:2000, IHC-P 1:100-300, ELISA 1:20000, IF-P/IF-F/ICC/IF 1:50-200
<b>Molecular Weight</b>	53kDa

**Product Name: Cytokeratin 8 (Acetyl Lys483) Rabbit Polyclonal Antibody**  
**Catalog #: AP Rab06180**

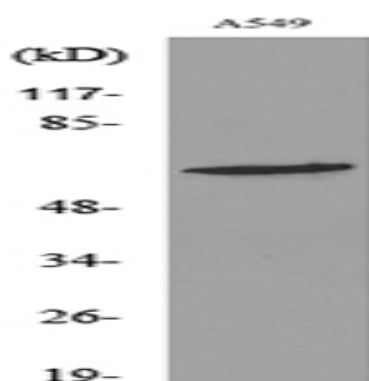


## Background

keratin 8(KRT8) Homo sapiens This gene is a member of the type II keratin family clustered on the long arm of chromosome 12. Type I and type II keratins heteropolymerize to form intermediate-sized filaments in the cytoplasm of epithelial cells. The product of this gene typically dimerizes with keratin 18 to form an intermediate filament in simple single-layered epithelial cells. This protein plays a role in maintaining cellular structural integrity and also functions in signal transduction and cellular differentiation. Mutations in this gene cause cryptogenic cirrhosis. Alternatively spliced transcript variants have been found for this gene. [provided by RefSeq, Jan 2012],disease:Defects in KRT8 are a cause of cryptogenic cirrhosis [MIM:215600],function:Together with KRT19, helps to link the contractile apparatus to dystrophin at the costameres of striated muscle.,miscellaneous:There are two types of cytoskeletal and microfibrillar keratin: I (acidic; 40-55 kDa) and II (neutral to basic; 56-70 kDa),PTM:O-glycosylated at multiple sites; glycans consist of single N-acetylglucosamine residues.,PTM:Phosphorylation on serine residues is enhanced during EGF stimulation and mitosis. Ser-74 phosphorylation plays an important role in keratin filament reorganization.,similarity:Belongs to the intermediate filament family.,subunit:Heterotetramer of two type I and two type II keratins. keratin-8 associates with keratin-18. Associates with KRT20. Interacts with HCV core protein and PNN. When associated with KRT19, interacts with DMD. Interacts with TCHP.,tissue specificity:Observed in muscle fibers accumulating in the costameres of myoplasm at the sarcolemma membrane in structures that contain dystrophin and spectrin. Expressed in gingival mucosa and hard palate of the oral cavity.,

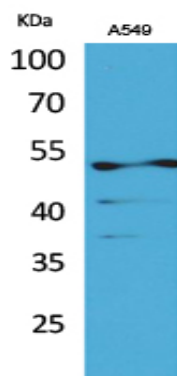
## Research Area

## Image Data

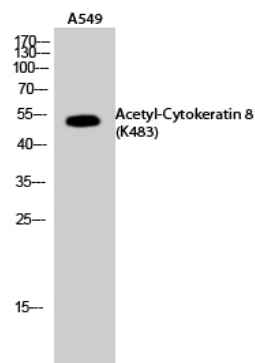


Western blot analysis of lysate from A549 cells, using K8 (Acetyl-Lys483) Antibody.

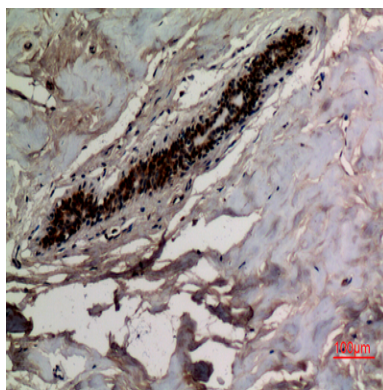
**Product Name: Cytokeratin 8 (Acetyl Lys483) Rabbit  
Polyclonal Antibody  
Catalog #: APRab06180**



Western Blot analysis of A549 cells using Acetyl-Cytokeratin 8 (K483) Polyclonal Antibody.. Secondary antibody was diluted at 1:20000



Western Blot analysis of A549 cells using Acetyl-Cytokeratin 8 (K483) Polyclonal Antibody. Secondary antibody was diluted at 1:20000



Immunohistochemical analysis of paraffin-embedded human-breast, antibody was diluted at 1:100

## Note

For research use only.