

Product Name: IRF5 (Phospho-Ser437) Rabbit Polyclonal Antibody
Catalog #: APRab05783

Summary

Production Name	IRF5 (Phospho-Ser437) Rabbit Polyclonal Antibody
Description	Rabbit Polyclonal Antibody
Host	Rabbit
Application	WB
Reactivity	Human,Mouse,Rat

Performance

Conjugation	Unconjugated
Modification	Phospho Antibody
Isotype	IgG
Clonality	Polyclonal
Form	Liquid
Storage	Store at 4°C short term. Aliquot and store at -20°C long term. Avoid freeze/thaw cycles.
Buffer	Liquid in PBS containing 50% glycerol, 0.5% BSA and 0.02% New type preservative N.
Purification	Affinity purification

Immunogen

Gene Name	IRF5
Alternative Names	Interferon regulatory factor 5 (IRF-5)
Gene ID	3663.0
SwissProt ID	Q13568.

Application

Dilution Ratio	WB 1:500-2000
Molecular Weight	55kDa

Background

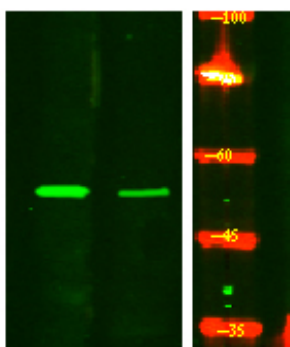
disease:Genetic variations in IRF5 are associated with susceptibility to inflammatory bowel disease type 14 (IBD14)

Product Name: IRF5 (Phospho-Ser437) Rabbit Polyclonal Antibody
Catalog #: APRab05783

[MIM:612245]. Inflammatory bowel disease (IBD) is a form of remitting Crohn disease (CD). CD may involve any part of the gastrointestinal tract, but most frequently the terminal ileum and colon. Bowel inflammation is transmural and discontinuous. CD is commonly classified as an autoimmune disease.,disease:Genetic variations in IRF5 are associated with susceptibility to rheumatoid arthritis (RA) [MIM:180300]. Rheumatoid arthritis is a complex, multifactorial disorder. It is one of the most common autoimmune diseases and it is characterized by inflammation of synovial tissue and joint destruction.,disease:Genetic variations in IRF5 are associated with susceptibility to systemic lupus erythematosus type 10 (SLEB10) [MIM:612251]. Systemic lupus erythematosus (SLE) is a chronic, inflammatory and often febrile multisystemic disorder of connective tissue. It affects principally the skin, joints, kidneys and serosal membranes. It is thought to represent a failure of the regulatory mechanisms of the autoimmune system.,similarity:Belongs to the IRF family.,similarity:Contains 1 tryptophan pentad repeat DNA-binding domain.,

Research Area

Image Data



Western Blot analysis of HeLa treated or untreated by LPS lysis, using primary antibody at 1:1000 dilution. Secondary antibody was diluted at 1:10000

Note

For research use only.