

Product Name: ZFP598 (phospho Tyr306) Rabbit Polyclonal Antibody
Catalog #: APRab05646

Summary

Production Name	ZFP598 (phospho Tyr306) Rabbit Polyclonal Antibody
Description	Rabbit Polyclonal Antibody
Host	Rabbit
Application	WB,IHC-P,IF-P,IF-F,ICC/IF,ELISA
Reactivity	Human,Mouse

Performance

Conjugation	Unconjugated
Modification	Phospho Antibody
Isotype	IgG
Clonality	Polyclonal
Form	Liquid
Storage	Store at 4°C short term. Aliquot and store at -20°C long term. Avoid freeze/thaw cycles.
Buffer	Liquid in PBS containing 50% glycerol, 0.5% BSA and 0.02% New type preservative N.
Purification	Affinity purification

Immunogen

Gene Name	ZNF598
Alternative Names	ZNF598; Zinc finger protein 598
Gene ID	90850.0
SwissProt ID	Q86UK7.Synthesized phospho-peptide around the phosphorylation site of human ZFP598 (phospho Tyr306)

Application

Dilution Ratio	WB 1:500-1:2000, IHC-P 1:100-1:300, ELISA 1:10000, IF-P/IF-F/ICC/IF 1:50-200
Molecular Weight	99kDa

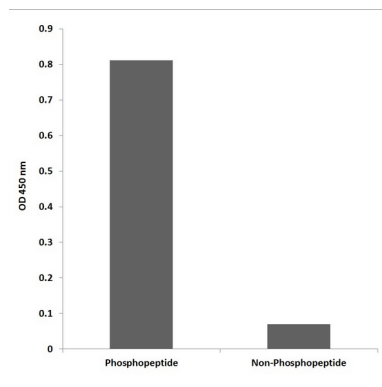
Product Name: ZFP598 (phospho Tyr306) Rabbit Polyclonal Antibody
Catalog #: APRab05646

Background

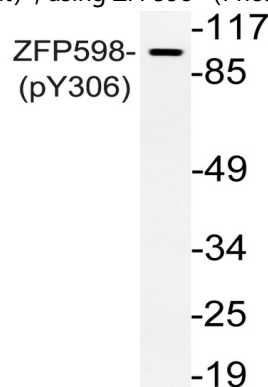
zinc finger protein 598(ZNF598) Homo sapiens Zinc-finger proteins bind nucleic acids and play important roles in various cellular functions, including cell proliferation, differentiation, and apoptosis. This protein and Grb10-interacting GYF protein 2 have been identified as a components of the mammalian 4EHP (m4EHP) complex. The complex is thought to function as a translation repressor in embryonic development. [provided by RefSeq, Oct 2012],similarity:Contains 1 C2H2-type zinc finger.,similarity:Contains 1 RING-type zinc finger.,

Research Area

Image Data



Enzyme-Linked Immunosorbent Assay (Phospho-ELISA) for Immunogen Phosphopeptide (Phospho-left) and Non-Phosphopeptide (Phospho-right) , using ZFP598 (Phospho-Tyr306) Antibody



Western blot analysis of lysate from Jurkat cells, using phospho-ZFP598 (Phospho-Tyr306) antibody.

Note

For research use only.