

Product Name: Tak1 (phospho Thr184) Rabbit Polyclonal Antibody
Catalog #: APRab05517

Summary

Production Name	Tak1 (phospho Thr184) Rabbit Polyclonal Antibody
Description	Rabbit Polyclonal Antibody
Host	Rabbit
Application	WB,IHC-P,IF-P,IF-F,ICC/IF,ELISA
Reactivity	Human,Mouse,Rat

Performance

Conjugation	Unconjugated
Modification	Phospho Antibody
Isotype	IgG
Clonality	Polyclonal
Form	Liquid
Storage	Store at 4°C short term. Aliquot and store at -20°C long term. Avoid freeze/thaw cycles.
Buffer	Liquid in PBS containing 50% glycerol, 0.5% BSA and 0.02% New type preservative N.
Purification	Affinity purification

Immunogen

Gene Name	MAP3K7
Alternative Names	MAP3K7; TAK1; Mitogen-activated protein kinase kinase kinase 7; Transforming growth factor-beta-activated kinase 1; TGF-beta-activated kinase 1
Gene ID	6885.0
SwissProt ID	O43318.The antiserum was produced against synthesized peptide derived from human TAK1 around the phosphorylation site of Thr184. AA range:161-210

Application

Dilution Ratio	WB 1:500-1:2000, IHC-P 1:100-1:300, ELISA 1:10000, IF-P/IF-F/ICC/IF 1:50-200
Molecular Weight	77kDa

Product Name: Tak1 (phospho Thr184) Rabbit Polyclonal Antibody
Catalog #: APRab05517

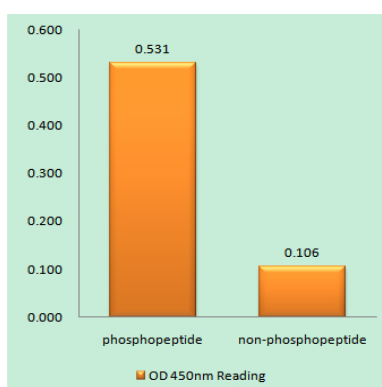
Background

The protein encoded by this gene is a member of the serine/threonine protein kinase family. This kinase mediates the signaling transduction induced by TGF beta and morphogenetic protein (BMP), and controls a variety of cell functions including transcription regulation and apoptosis. In response to IL-1, this protein forms a kinase complex including TRAF6, MAP3K7P1/TAB1 and MAP3K7P2/TAB2; this complex is required for the activation of nuclear factor kappa B. This kinase can also activate MAPK8/JNK, MAP2K4/MKK4, and thus plays a role in the cell response to environmental stresses. Four alternatively spliced transcript variants encoding distinct isoforms have been reported. [provided by RefSeq, Jul 2008],catalytic activity:ATP + a protein = ADP + a phosphoprotein.,cofactor:Magnesium.,function:Component of a protein kinase signal transduction cascade. Mediator of TGF-beta signal transduction. Stimulates NF-kappa-B activation and the p38 MAPK pathway.,PTM:Association with MAP3K7IP1 promotes autophosphorylation and subsequent activation. Dephosphorylation at Thr-187 by PP2A and PPP6C leads to inactivation.,similarity:Belongs to the protein kinase superfamily.,similarity:Belongs to the protein kinase superfamily. STE Ser/Thr protein kinase family. MAP kinase kinase kinase subfamily.,similarity:Contains 1 protein kinase domain.,subunit:Binds both upstream activators and downstream substrates in multimolecular complexes. Interacts with MAP3K7IP1 and MAP3K7IP2. Interacts with PPM1L. Interaction with PP2A and PPP6C leads to its' repressed activity.,

Research Area

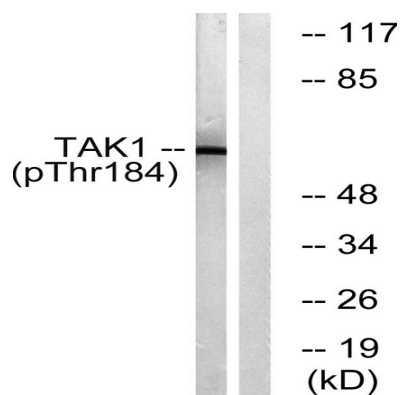
MAPK_ERK_Growth;MAPK_G_Protein;WNT;WNT-T CELLAdherens_Junction;Toll_Like;NOD-like receptor;RIG-I-like receptor;T_Cell_Receptor;

Image Data



Enzyme-Linked Immunosorbent Assay (Phospho-ELISA) for Immunogen Phosphopeptide (Phospho-left) and Non-Phosphopeptide (Phospho-right) , using TAK1 (Phospho-Thr184) Antibody

**Product Name: Tak1 (phospho Thr184) Rabbit
Polyclonal Antibody**
Catalog #: APRab05517



Western blot analysis of lysates from HepG2 cells treated with TNF 20ng/ml 5', using TAK1 (Phospho-Thr184) Antibody.
The lane on the right is blocked with the phospho peptide.

Note

For research use only.