

**Product Name: Ras-GRF1 (phospho Ser916) Rabbit Polyclonal Antibody**  
**Catalog #: APRab05350**

---

## Summary

<b>Production Name</b>	Ras-GRF1 (phospho Ser916) Rabbit Polyclonal Antibody
<b>Description</b>	Rabbit Polyclonal Antibody
<b>Host</b>	Rabbit
<b>Application</b>	WB,IHC-P,IF-P,IF-F,ICC/IF,ELISA
<b>Reactivity</b>	Mouse,Rat

## Performance

<b>Conjugation</b>	Unconjugated
<b>Modification</b>	Phospho Antibody
<b>Isotype</b>	IgG
<b>Clonality</b>	Polyclonal
<b>Form</b>	Liquid
<b>Storage</b>	Store at 4°C short term. Aliquot and store at -20°C long term. Avoid freeze/thaw cycles.
<b>Buffer</b>	Liquid in PBS containing 50% glycerol, 0.5% BSA and 0.02% New type preservative N.
<b>Purification</b>	Affinity purification

## Immunogen

<b>Gene Name</b>	RASGRF1 RASGRF1; CDC25; GNRP; GRF1; Ras-specific guanine nucleotide-releasing factor 1; Ras-
<b>Alternative Names</b>	GRF1; Guanine nucleotide-releasing protein; GNRP; Ras-specific nucleotide exchange factor CDC25
<b>Gene ID</b>	192213.0
<b>SwissProt ID</b>	P28818.The antiserum was produced against synthesized peptide derived from mouse Ras-GRF1 around the phosphorylation site of Ser916. AA range:882-931

## Application

<b>Dilution Ratio</b>	WB 1:500-2000, IHC-P 1:100-1:300, IF-P/IF-F/ICC/IF 1:200-1:1000, ELISA 1:20000.Not
-----------------------	--

**Product Name: Ras-GRF1 (phospho Ser916) Rabbit Polyclonal Antibody**  
**Catalog #: APRab05350**



yet tested in other applications.

#### Molecular Weight

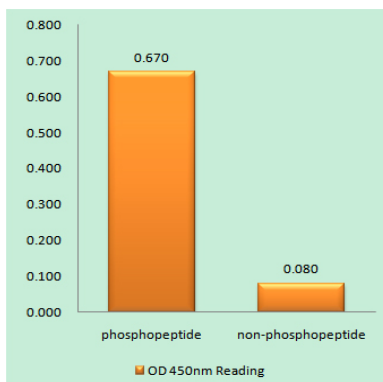
## Background

RASGRF1 (Ras Protein Specific Guanine Nucleotide Releasing Factor 1) is a Protein Coding gene. Diseases associated with RASGRF1 include bleeding disorder, platelet-type, 18 and refractive error. Among its related pathways are Signaling by GPCR and Immune System. GO annotations related to this gene include guanyl-nucleotide exchange factor activity and Ras guanyl-nucleotide exchange factor activity. An important paralog of this gene is RALGDS. promotes the exchange of Ras-bound GDP by GTP.

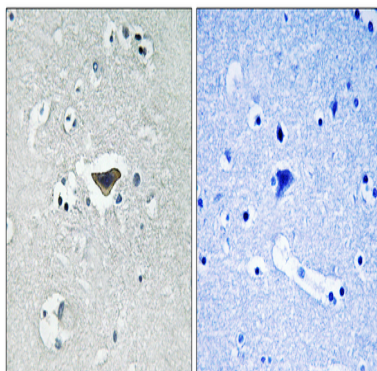
## Research Area

MAPK

## Image Data



Enzyme-Linked Immunosorbent Assay (Phospho-ELISA) for Immunogen Phosphopeptide (Phospho-left) and Non-Phosphopeptide (Phospho-right), using Ras-GRF1 (Phospho-Ser916) Antibody



Immunohistochemistry analysis of paraffin-embedded human brain, using Ras-GRF1 (Phospho-Ser916) Antibody. The picture on the right is blocked with the phospho peptide.

**Product Name: Ras-GRF1 (phospho Ser916) Rabbit  
Polyclonal Antibody  
Catalog #: APRab05350**

---



**Note**

For research use only.