

Product Name: Raf-B (phospho Ser446) Rabbit Polyclonal Antibody
Catalog #: APRab05343

Summary

Production Name	Raf-B (phospho Ser446) Rabbit Polyclonal Antibody
Description	Rabbit Polyclonal Antibody
Host	Rabbit
Application	WB,IHC-P,IF-P,IF-F,ICC/IF,ELISA
Reactivity	Human,Mouse

Performance

Conjugation	Unconjugated
Modification	Phospho Antibody
Isotype	IgG
Clonality	Polyclonal
Form	Liquid
Storage	Store at 4°C short term. Aliquot and store at -20°C long term. Avoid freeze/thaw cycles.
Buffer	Liquid in PBS containing 50% glycerol, 0.5% BSA and 0.02% New type preservative N.
Purification	Affinity purification

Immunogen

Gene Name	BRAF
Alternative Names	BRAF; BRAF1; RAFB1; Serine/threonine-protein kinase B-raf; Proto-oncogene B-Raf; p94; v-Raf murine sarcoma viral oncogene homolog B1
Gene ID	673.0
SwissProt ID	P15056.The antiserum was produced against synthesized peptide derived from human B-RAF around the phosphorylation site of Ser446. AA range:411-460

Application

Dilution Ratio	WB 1:500-1:2000, IHC-P 1:100-1:300, ELISA 1:10000, IF-P/IF-F/ICC/IF 1:50-200
Molecular Weight	85kDa

**Product Name: Raf-B (phospho Ser446) Rabbit
Polyclonal Antibody
Catalog #: AP Rab05343**

Background

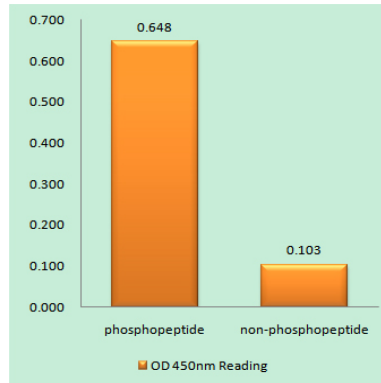
This gene encodes a protein belonging to the raf/mil family of serine/threonine protein kinases. This protein plays a role in regulating the MAP kinase/ERKs signaling pathway, which affects cell division, differentiation, and secretion. Mutations in this gene are associated with cardiofaciocutaneous syndrome, a disease characterized by heart defects, mental retardation and a distinctive facial appearance. Mutations in this gene have also been associated with various cancers, including non-Hodgkin lymphoma, colorectal cancer, malignant melanoma, thyroid carcinoma, non-small cell lung carcinoma, and adenocarcinoma of lung. A pseudogene, which is located on chromosome X, has been identified for this gene. [provided by RefSeq, Jul 2008],catalytic activity:ATP + a protein = ADP + a phosphoprotein.,cofactor: Binds 2 zinc ions per subunit.,disease: Defects in BRAF are a cause of cardiofaciocutaneous syndrome (CFC syndrome) [MIM:115150]; also known as cardio-facio-cutaneous syndrome. CFC syndrome is characterized by a distinctive facial appearance, heart defects and mental retardation. Heart defects include pulmonic stenosis, atrial septal defects and hypertrophic cardiomyopathy. Some affected individuals present with ectodermal abnormalities such as sparse, friable hair, hyperkeratotic skin lesions and a generalized ichthyosis-like condition. Typical facial features are similar to Noonan syndrome. They include high forehead with bitemporal constriction, hypoplastic supraorbital ridges, downslanting palpebral fissures, a depressed nasal bridge, and posteriorly angulated ears with prominent helices. The inheritance of CFC syndrome is autosomal dominant.,disease: Defects in BRAF are involved in a wide range of cancers.,disease: Defects in BRAF are involved in lung cancer [MIM:211980],disease: Defects in BRAF are involved in non-Hodgkin lymphoma (NHL) [MIM:605027]. NHL is a cancer that starts in cells of the lymph system, which is part of the body's immune system. NHLs can occur at any age and are often marked by enlarged lymph nodes, fever and weight loss.,disease: Defects in BRAF may be a cause of colorectal cancer (CRC) [MIM:114500],function: Involved in the transduction of mitogenic signals from the cell membrane to the nucleus. May play a role in the postsynaptic responses of hippocampal neuron.,similarity: Belongs to the protein kinase superfamily. TKL Ser/Thr protein kinase family. RAF subfamily.,similarity: Contains 1 phorbol-ester/DAG-type zinc finger.,similarity: Contains 1 protein kinase domain.,similarity: Contains 1 RBD (Ras-binding) domain.,subunit: Interacts with RIT1.,tissue specificity: Brain and testis.,

Research Area

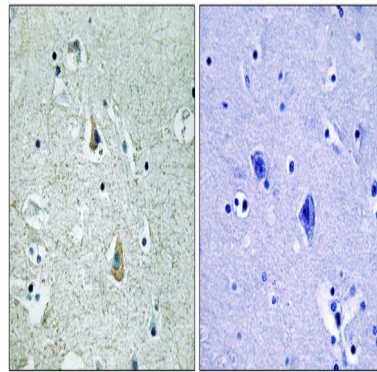
Regulation of Actin Dynamics; MAPK_ERK_Growth; MAPK_G_Protein; Cell Growth; mTOR

Image Data

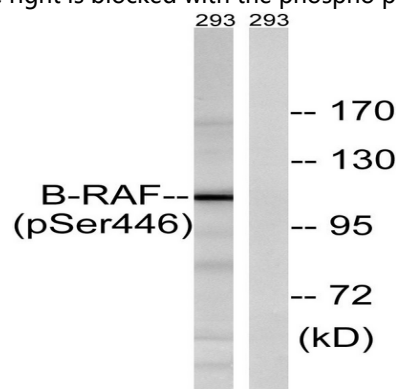
Product Name: Raf-B (phospho Ser446) Rabbit Polyclonal Antibody
Catalog #: APRab05343



Enzyme-Linked Immunosorbent Assay (Phospho-ELISA) for Immunogen Phosphopeptide (Phospho-left) and Non-Phosphopeptide (Phospho-right), using B-RAF (Phospho-Ser446) Antibody

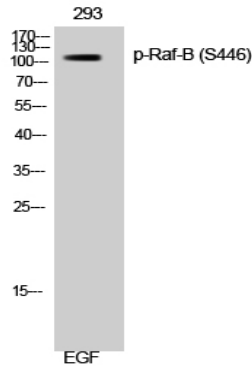


Immunohistochemistry analysis of paraffin-embedded human brain, using B-RAF (Phospho-Ser446) Antibody. The picture on the right is blocked with the phospho peptide.

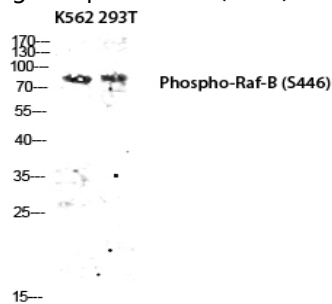


Western blot analysis of lysates from 293 cells treated with EGF 200ng/ml 30', using B-RAF (Phospho-Ser446) Antibody. The lane on the right is blocked with the phospho peptide.

Product Name: Raf-B (phospho Ser446) Rabbit Polyclonal Antibody
Catalog #: APRab05343



Western Blot analysis of 293 cells using Phospho-Raf-B (S446) Polyclonal Antibody diluted at 1: 1000



Western blot analysis of K562 293T lysis using Phospho-Raf-B (S446) antibody. Antibody was diluted at 1:1000

Note

For research use only.