

**Product Name: Pragmin (phospho Tyr413) Rabbit Polyclonal Antibody**  
**Catalog #: APRab05301**

---

## Summary

<b>Production Name</b>	Pragmin (phospho Tyr413) Rabbit Polyclonal Antibody
<b>Description</b>	Rabbit Polyclonal Antibody
<b>Host</b>	Rabbit
<b>Application</b>	WB,IHC-P,IF-P,IF-F,ICC/IF,ELISA
<b>Reactivity</b>	Human,Mouse,Rat

## Performance

<b>Conjugation</b>	Unconjugated
<b>Modification</b>	Phospho Antibody
<b>Isotype</b>	IgG
<b>Clonality</b>	Polyclonal
<b>Form</b>	Liquid
<b>Storage</b>	Store at 4°C short term. Aliquot and store at -20°C long term. Avoid freeze/thaw cycles.
<b>Buffer</b>	Liquid in PBS containing 50% glycerol, 0.5% BSA and 0.02% New type preservative N.
<b>Purification</b>	Affinity purification

## Immunogen

<b>Gene Name</b>	SGK223
<b>Alternative Names</b>	SGK223; Tyrosine-protein kinase SgK223; Sugen kinase 223
<b>Gene ID</b>	157285.0
<b>SwissProt ID</b>	Q86YV5.Synthesized phospho-peptide around the phosphorylation site of human Pragmin (phospho Tyr413)

## Application

<b>Dilution Ratio</b>	WB 1:500-1:2000, IHC-P 1:100-1:300, ELISA 1:10000, IF-P/IF-F/ICC/IF 1:50-200
<b>Molecular Weight</b>	175kDa

**Product Name: Pragmin (phospho Tyr413) Rabbit Polyclonal Antibody**  
**Catalog #: APRab05301**

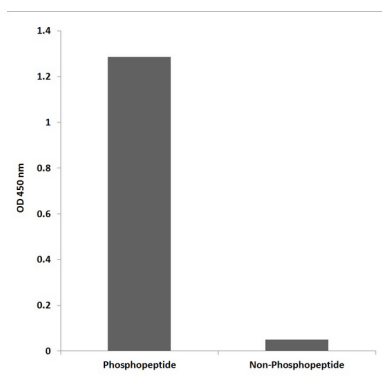


## Background

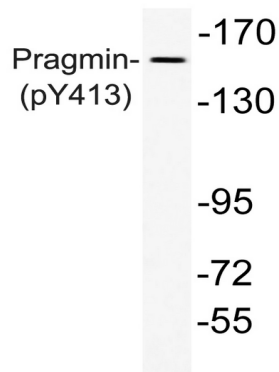
This gene encodes an enzyme that belongs to the tyrosine protein kinase family. A similar protein in rat binds to Rho family GTPase 2 (Rnd2) and regulates neurite outgrowth via activation of Ras homolog gene family, member A (RhoA). [provided by RefSeq, Mar 2014], catalytic activity: ATP + a [protein]-L-tyrosine = ADP + a [protein]-L-tyrosine phosphate., similarity: Belongs to the protein kinase superfamily., similarity: Contains 1 protein kinase domain.,

## Research Area

## Image Data



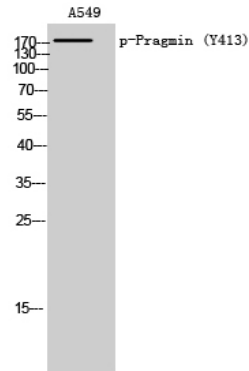
Enzyme-Linked Immunosorbent Assay (Phospho-ELISA) for Immunogen Phosphopeptide (Phospho-left) and Non-Phosphopeptide (Phospho-right), using Pragmin (Phospho-Tyr413) Antibody



Western blot analysis of lysate from A549 cells, using phospho-Pragmin (Phospho-Tyr413) antibody.

**Product Name: Pragmin (phospho Tyr413) Rabbit  
Polyclonal Antibody  
Catalog #: APRab05301**

---



Western Blot analysis of A549 cells using Phospho-Pragmin (Y413) Polyclonal Antibody

### **Note**

For research use only.